

# Straight Solder DIP Termination Connectors

## 57GE Series



### FEAURES

- 57GE series is straight DIP termination connectors which shielded the interface for EMI protection.
  - Cantilever contact design
  - Intermatable with each 57, 57FE, 57JE series connectors.
- ・ 40 Type (Interface Receptacle)

### SPECIFICATIONS

Rated Voltage	500V AC (r.m.s.)
Rated Current	3A / Contact
Dielectric Withstanding Voltage	1200V AC (r.m.s.) at 1 minute
Insulation Resistance	1000M $\Omega$ (min.) at 500V DC
Contact Resistance	35m $\Omega$ (max.)
Operating Temperature	-55°C~ 105°C

### MATERIAL/FINISH

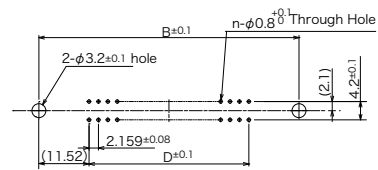
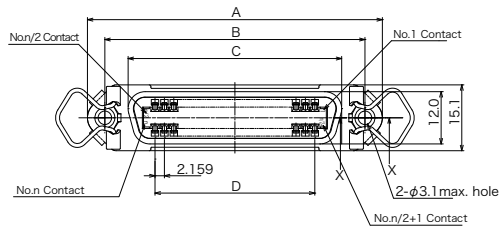
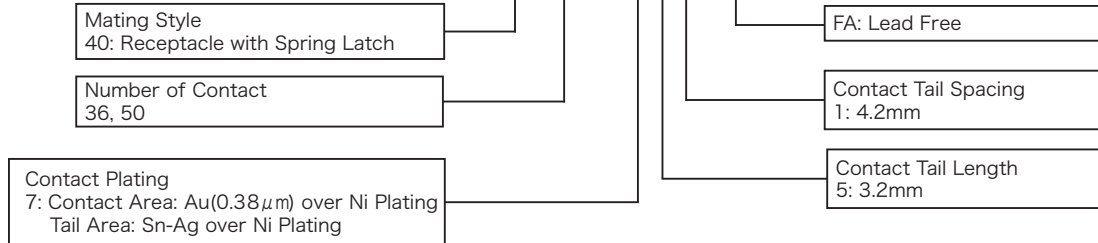


ITEM	MATERIAL / FINISH
Insulator	PBT Resin(UL94V-0) / Black
Shell	Steel or Brass / Ni Plating
Contact	Copper Alloy / Au over Ni Plating
Bail Lock	Stainless Steel

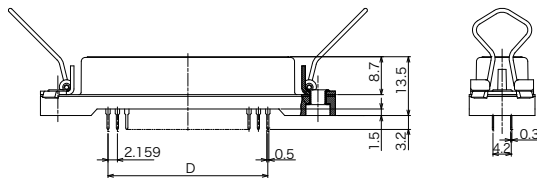
© Specifications and/or dimensions in this catalogue are subject to change without notice.  
Your catalogue checking the latest specifications with our drawings would be highly appreciated.

# ▶ 40 Type Interface Receptacle

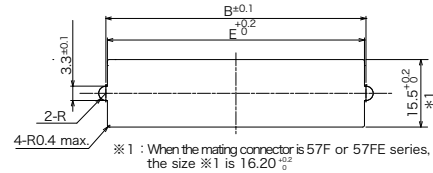
## 57GE-40360-751-FA



PCB Mounting Dimensions  
Applicable PCB Thickness=1.6 $\pm$ 0.19mm



Section X-X



Panel Mounting Dimensions(Rear Mounting)  
Applicable Panel Thickness=1.6mm max.

Part Number	Number of Contact	A	B	C	D	E
57GE-40360-751-FA	36	67.74	59.74	49.0	36.703	59.04
57GE-40500-751-FA	50	82.85	74.85	64.2	51.816	74.15

# ▶ 40 Type Interface Receptacle with Board Lock

## 57GE-40360-751 (D15)-FA

Mating Style  
40: Receptacle with Spring Latch

Number of Contact  
14, 24, 36, 50

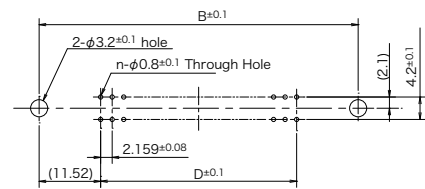
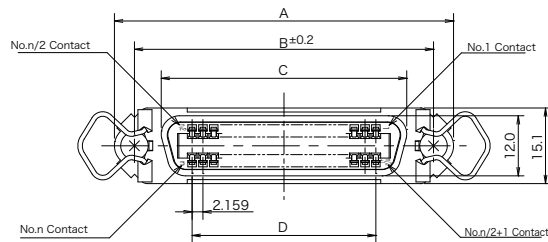
Contact Plating  
7: Contact Area: Au(0.38μm) over Ni Plating  
Tail Area: Sn-Ag over Ni Plating

FA: Lead Free

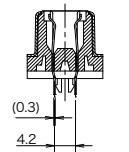
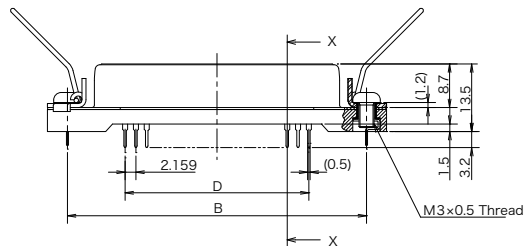
Deviation  
(D15): with Board Lock  
Pan-head Screw Assembled

Contact Tail Spacing  
1: 4.2mm

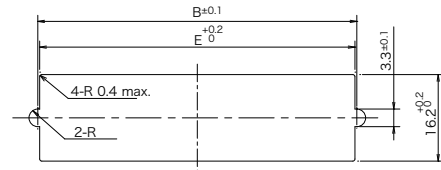
Contact Tail Length  
5: 3.2mm



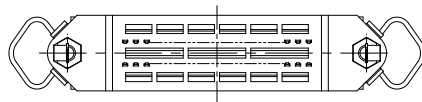
PCB Mounting Dimensions  
Applicable PCB Thickness=1.6±0.19mm



Section X-X



Panel Mounting Dimensions(Rear Mounting)  
Applicable Panel Thickness=1.6mm max.



Part Number	Number of Contact	A	B	C	D	E
57GE-40140-751 (D15) -FA	14	44.00	36.00	25.4	12.954	35.30
57GE-40240-751 (D15) -FA	24	54.78	46.78	36.2	23.749	46.08
57GE-40360-751 (D15) -FA	36	67.74	59.74	49.0	36.703	59.04
57GE-40500-751 (D15) -FA	50	82.85	74.85	64.2	51.816	74.15