

17JE Series Hood Kit

17JE Series



※ The connectors which are shown in the picture are supplied separately.



17JE-25H-1x-CF



17JE-09H-1x-CF



17JE-25LH-1x-CF

FEATURE

- Hood is made with ABS resin. It is light-weight and compact
- Hood is metalized finish for EMI shield.

MATERIAL/FINISH

ABS Resin / Ni Plating



▶ Connector and Hood Kit

17JE(Solder Termination Type) and Hood kit Combination Part Number

Applicable Connector

17JE Series Solder Termination

17DE Series Crimp Termination

Connector with Cable Hood Kit (Standard Cable)

EMI Shielded

17JE-13250-02(D8Ax)A-CG

Mating Style

- 1: Socket Connector (for Standard Cable)
- 2: Pin Connector (for Standard Cable)

Plating on Shell

- 3: Ni Plating

Number of Contact

- 09, 15, 25, 37

Termination

- 0: Solder-cup

Contact Plating

- 2: Au(Flash) over Ni Plating

Lead and Cadmium Free

A-CG : Lead and Cadmium Free
(Socket Connector)

-CG : Lead and Cadmium Free
(Pin Connector)

Deviation

D8 A □

Lock Screw

No Digit : Standard

2 : Knurled Screw with Slot Head

6 : Knurled Screw

Thread

A : M2.6×0.45

B : M3×0.5

C : # 4-40UNC

Straight Hood

Nickel Plating Metarised-finish

Connector with Cable Hood Kit (Slim Cable)

EMI Shielded

17JE-33250-02(D8Ax)A-CG(R1)

*

Mating Style

- 3: Socket Connector (for Slim Cable)
- 4: Pin Connector (for Slim Cable)

Plating on Shell

- 3: Ni Plating

Number of Contact

- 09, 15, 25, 37

Termination

- 0: Solder-cup

Contact Plating

- 2: Au(Flash) over Ni Plating

Lead and Cadmium Free

A-CG : Lead and Cadmium Free
(Socket Connector)

-CG : Lead and Cadmium Free
(Pin Connector)

Deviation

D8 A □

Lock Screw

No Digit : Standard

2 : Knurled Screw with Slot Head

6 : Knurled Screw

Thread

A : M2.6×0.45

B : M3×0.5

C : # 4-40UNC

Straight Hood

Nickel Plating Metarised-finish

* : (R1) of part name of 9 contacts is nothing.

Regarding the detail of 17JE solder type, please refer to 17JE Solder type catalogue.

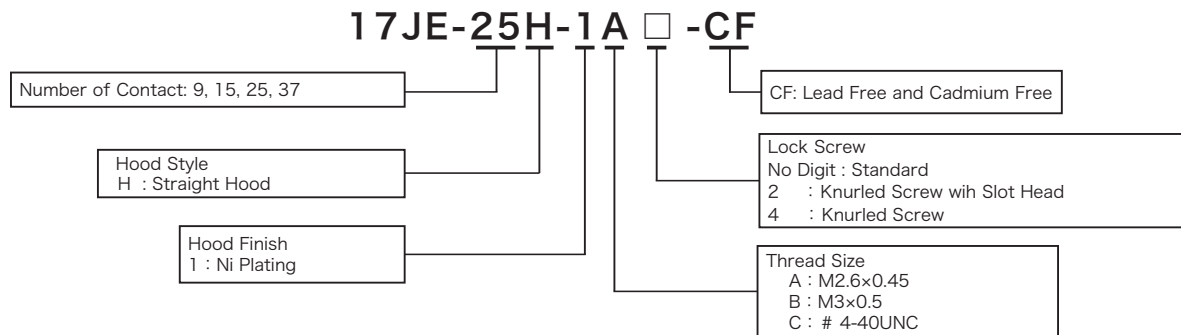
© Specifications and/or dimensions in this catalog are subject to change without notice.

Please verify the latest specifications with our drawings.

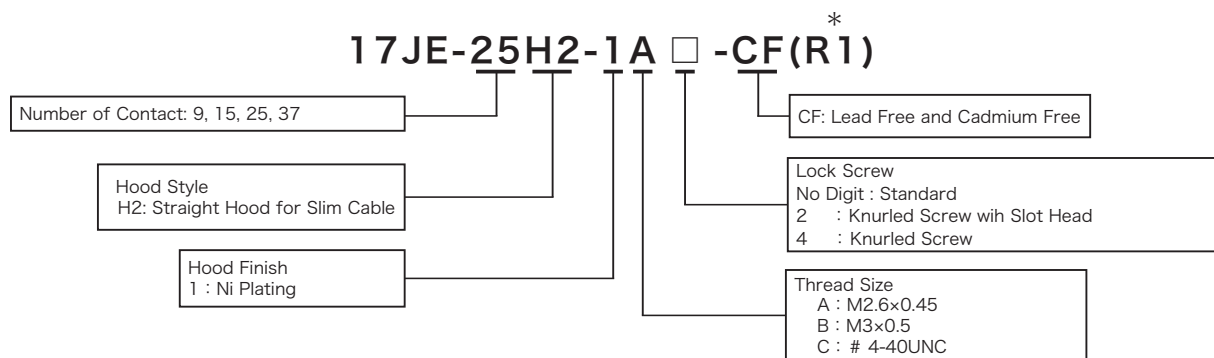
<https://www.connector.fujikura.com>

► Straight Hood

Straight Hood (Standard Type)



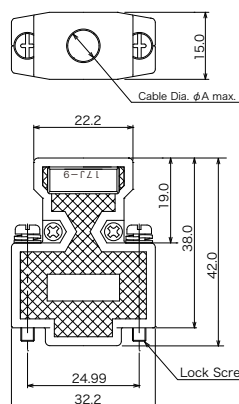
Straight Hood for Slim Cable



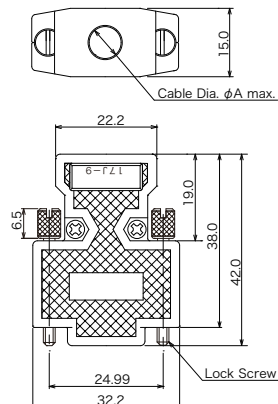
* : (R1) of part name of 9 contacts is nothing.

▶ Straight Hood

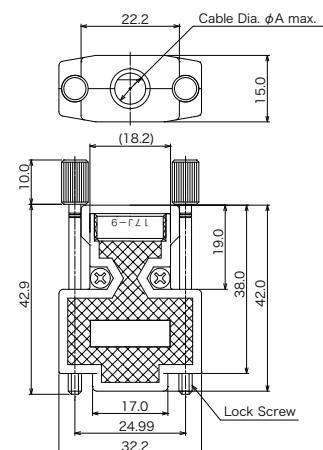
9 Contacts



17JE-09H-1 □ -CF



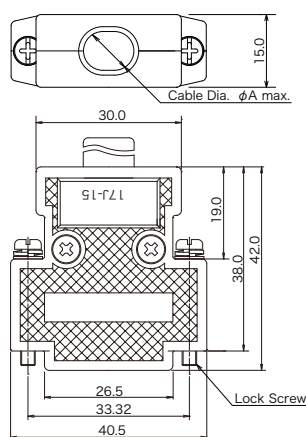
17JE-09H-1 □ 2-CF



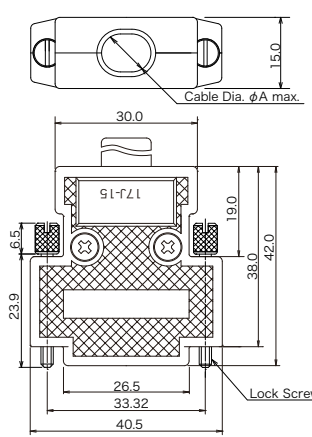
17JE-09H-1 □ 4-CF

Part Number	Cable Dia. φ A
17JE-09H-1 □ □ -CF	φ 7.5 max.
17JE-09H2-1 □ □ -CF	φ 5.1 max.

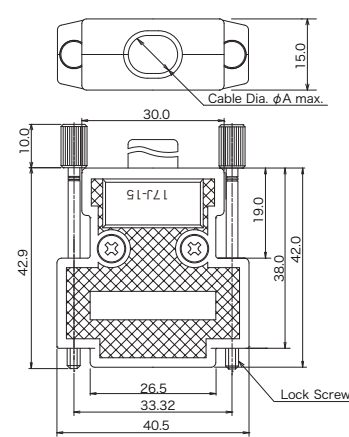
15 Contacts



17JE-15H-1 □ -CF



17JE-15H-1 □ 2-CF

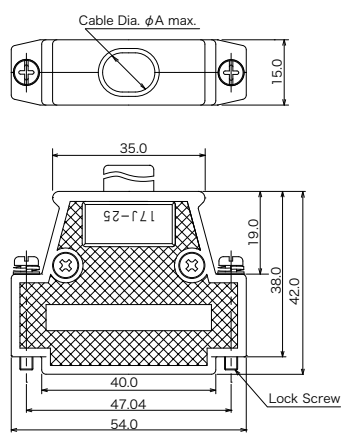


17JE-15H-1 □ 4-CF

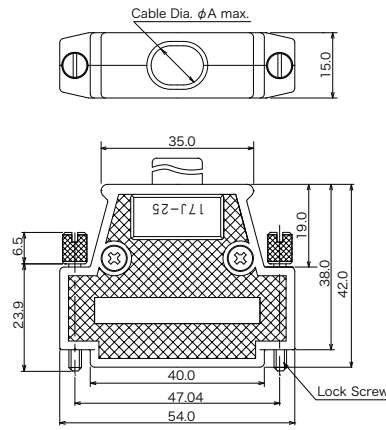
Part Number	Cable Dia. φ A
17JE-15H-1 □ □ -CF	φ 8.0 max.
17JE-15H2-1 □ □ -CF(R1)	φ 5.7 max.

► Straight Hood

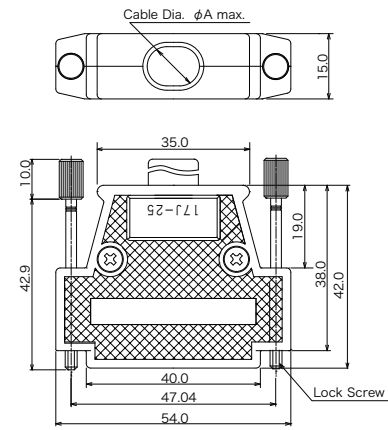
25 Contacts



17JE-25H-1 □ -CF



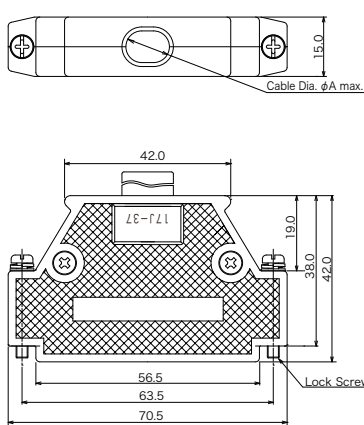
17JE-25H-1 □ 2-CF



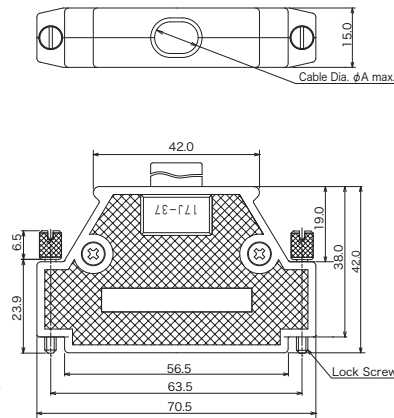
17JE-25H-1 □ 4-CF

Part Number	Cable Dia. ϕA
17JE-25H-1 □ □ -CF	$\phi 9.0$ max.
17JE-25H2-1 □ □ -CF(R1)	$\phi 6.6$ max.

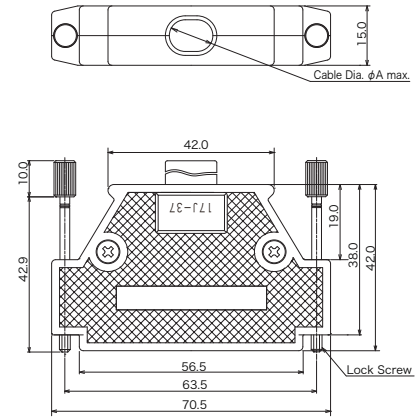
37 Contacts



17JE-37H-1 □ -CF



17JE-37H-1 □ 2-CF



17JE-37H-1 □ 4-CF

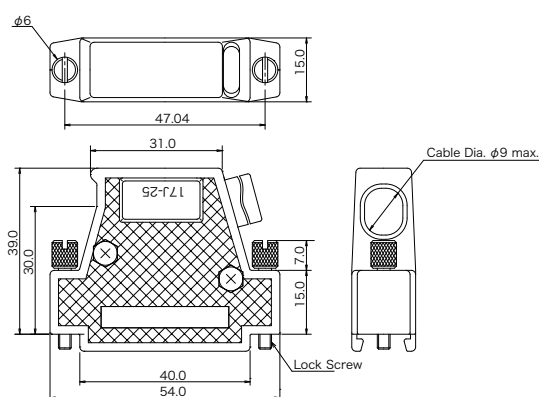
Part Number	Cable Dia. ϕA
17JE-37H-1 □ □ -CF	$\phi 10.5$ max.
17JE-37H2-1 □ □ -CF(R1)	$\phi 7.4$ max.

▶ Right Angle Hood

※ This hood is not applicable to 17DE-13250-C and 17DE-23250-C.

17JE-25LH-1A1-CF

Number of Contact 25	CF : Lead Free and Cadmium Free
Hood Style LH : Right Angle	Lock Screw 1 : Knurled Screw with Slot Head
Hood Finish 1 : Ni Plating	Thread Size A : M2.6×0.45 B : M3×0.5 C : # 4-40UNC

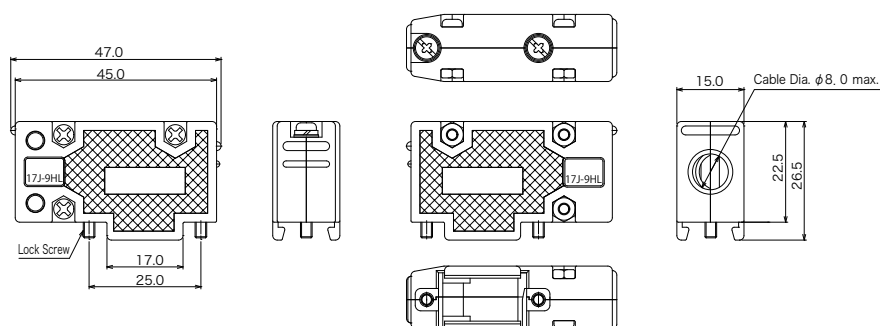


17JE-25LH-1A1-CF

※ This hood is not applicable to 17DE-13090-C and 17DE-23090-C.

17JE-09LH1-1A-CF

Number of Contact : 9	CF : Lead Free and Cadmium Free
Hood Style LH1 : Right Angle	Thread Size A : M2.6×0.45 B : M3×0.5 C : # 4-40UNC
Hood Finish 1 : Ni Plating	



Cable to cable connection

- We recommend to use the stud when a pair of cable connectors are mated.

