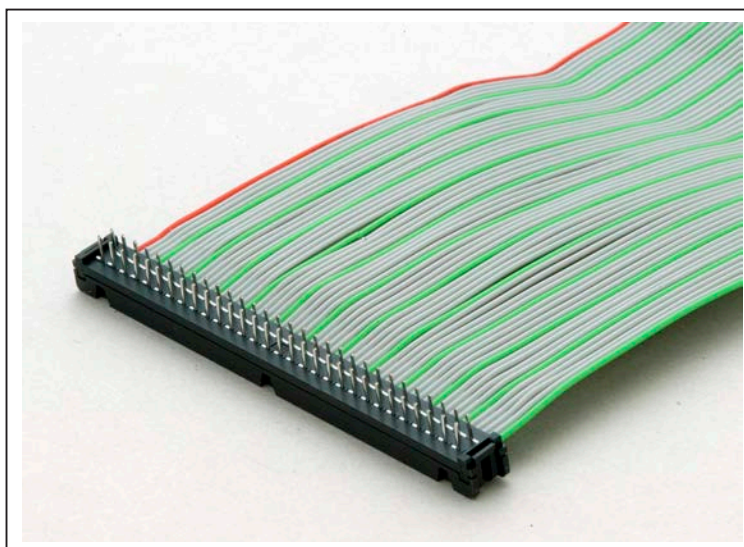


1.27mm Pitch Flat Cable IDC Connector

FRC-J Series



FEATURE

FRC-J series is a connector which connects PCB and 1.27mm pitch flat cable.

It is suitable to connection on the same PCB and across PCBs.

Row of contacts are 2 (2.54mm grid)

SPECIFICATIONS

Rated Voltage	250V AC (r.m.s.)
Rated Current	1A / Contact
Insulation Resistance	1000 MΩ min. at 500V DC
Contact Resistance	15 mΩ max.
Dielectric Withstanding Voltage	500V AC (r.m.s.) / 1 minute
Operating Temperature	-55°C ~ +85°C
Applicable Cable	Cable Pitch 1.27mm AWG#28 (Stranded Cable, Single Conductor) AWG#30 (Single Conductor)

※ Please contact us for wiring work.

MATERIAL/FINISH



Item	Material / Finish
Contact	Copper Alloy / Au(Flash) or Sn-Ag over Ni Plating
Base	PBT Resin (UL94V-0) / Black
Cover	PBT Resin (UL94V-0) / Black

© Specifications and/or dimensions in this catalog are subject to change without notice.

250317 Your checking the latest specifications with our drawings would be highly appreciated.

<https://www.connector.fujikura.com>

▶ PCB Mounting Type Connector

FRC-J16A-xSN

Connector Type
J : 2 Row, 2.54mm grid

Number of Contact
10, 16, 20, 26, 30, 34, 40, 50, 60

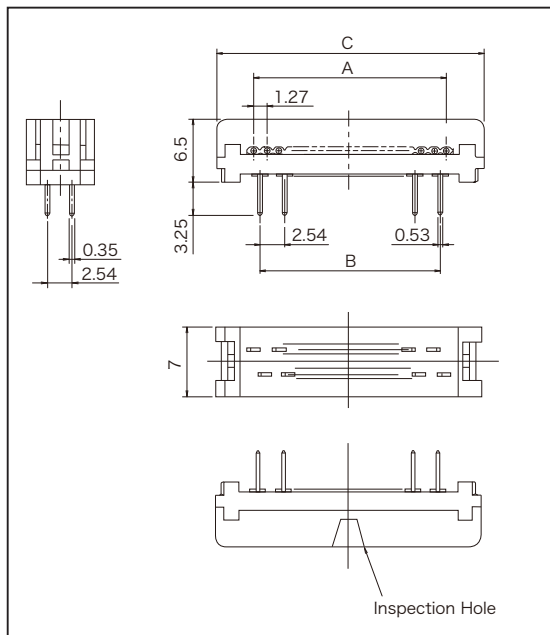
Cover Style
A : Closed-end Cover

Strain Relief
N : without Strain Relief

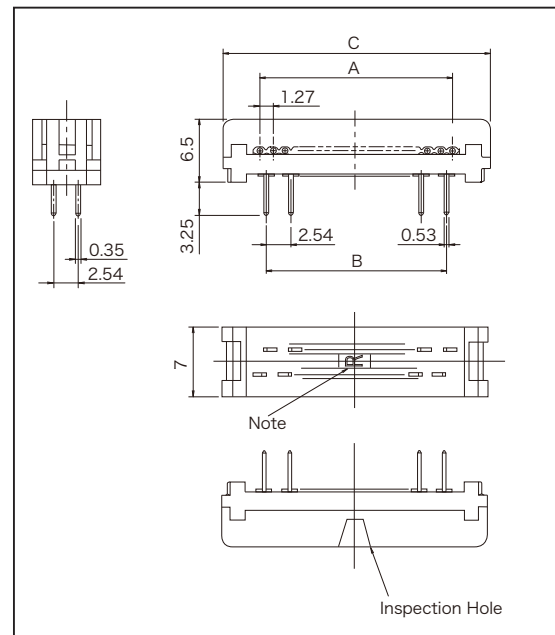
Contact Arrangement
S : Standard R : Reverse

Contact Plating
3 : Au (Flash) over Ni Plating

Standard Type

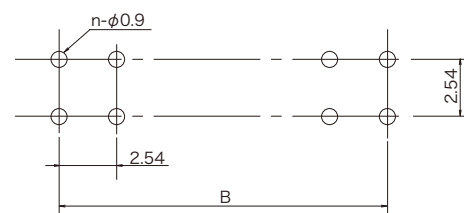


Reverse Type



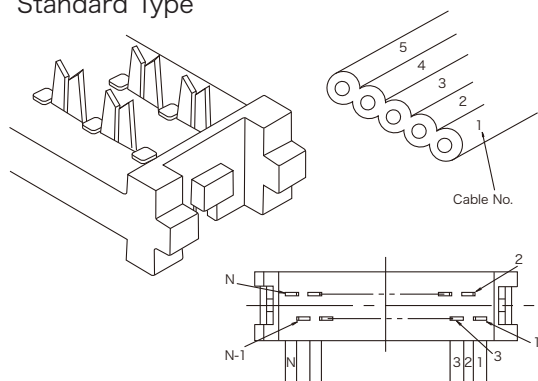
Part Number	Number of Contact	A	B	C
FRC-J10A-xSN-xx	10	11.43	10.16	19.10
FRC-J16A-xSN-xx	16	19.05	17.78	26.72
FRC-J20A-xSN-xx	20	24.13	22.86	31.80
FRC-J26A-xSN-xx	26	31.75	30.48	39.42
FRC-J30A-xSN-xx	30	36.83	35.56	44.50
FRC-J34A-xSN-xx	34	41.91	40.64	49.58
FRC-J40A-xSN-xx	40	49.53	48.26	57.20
FRC-J50A-xSN-xx	50	62.23	60.96	69.90
FRC-J60A-xSN-xx	60	74.93	73.66	82.60

Note : "R" marking is shown on the bottom of reverse type connector.
Recommended PCB Mounting Dimensions



▶ Cable and Contact Location

Standard Type



Reverse Type

