

Power Board to Board Connector

PD3 Series



OUTLINE

PD3 series is a board to board connector developed for power connection.

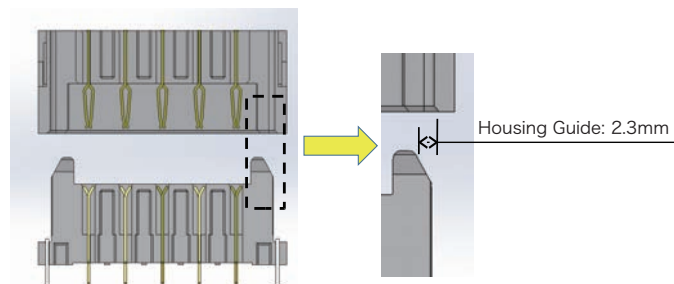
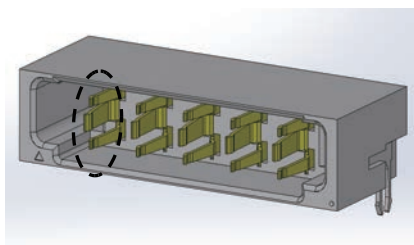


FEATURE

- Contact is highly reliable connection due to the fork-shaped three-pointed contact design and independent from the housing.
- Offset the gap between two connectors.
- Mounting on PCB is applied Dip type.

Contacts are independent from the housing

Offset the gap when mating



APPLICATIONS

High-end Server, Storage, Networking

SPECIFICATIONS

Rated Voltage	100V DC
Rated Current	10A / Power Contact
Dielectric Withstanding Voltage	1000 V AC (r.m.s.) / 1 minute
Insulation Resistance	1000M Ω min. at 500V DC
Contact Resistance	1.0m Ω max.(Power Contact)
Number of Contact	Power Contact(6 / 12) Signal Contact(78 / 99)
Operating Temperature range	-20°C ~ +105°C
Operating humidity range	95% Rh max.(However, there must not be dewy.)
Preservation temperature	-20°C ~ +105°C
Preservation humidity	95% Rh max.

MATERIAL / FINISH

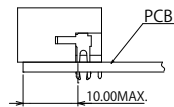
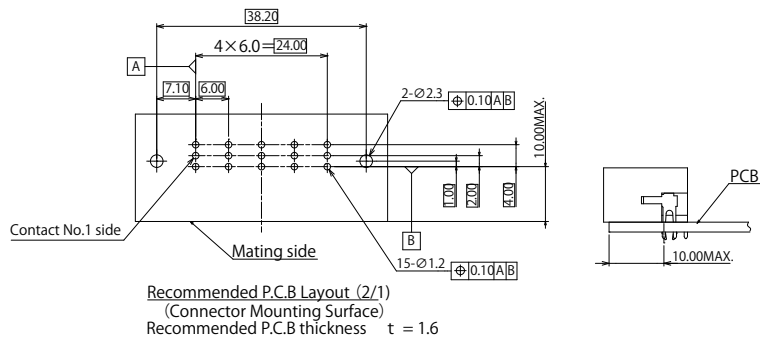
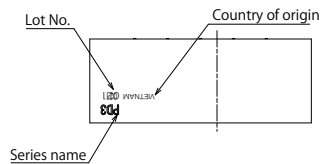
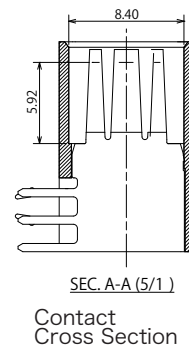
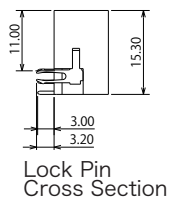
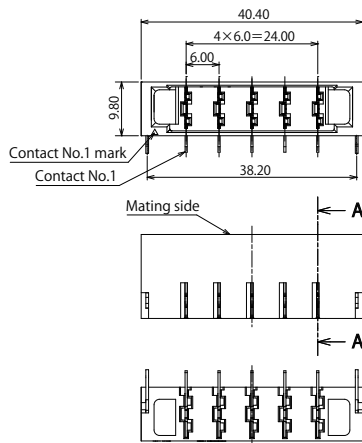
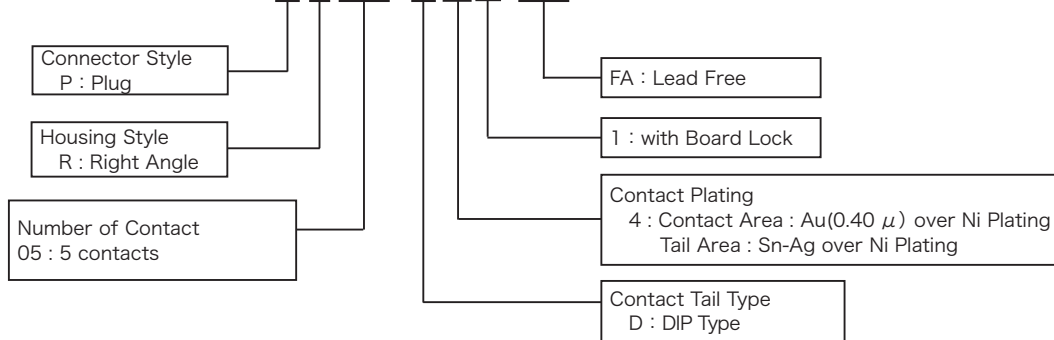


Item	Material / Finish
Housing	Heat resistant Resin(UL94V-0) / Black
Contact	Copper Alloy /Contact Area : Au over Ni Plating Tail Area : Sn-Ag over Ni Plating
Board Lock	Copper Alloy / Sn-Ag Plating

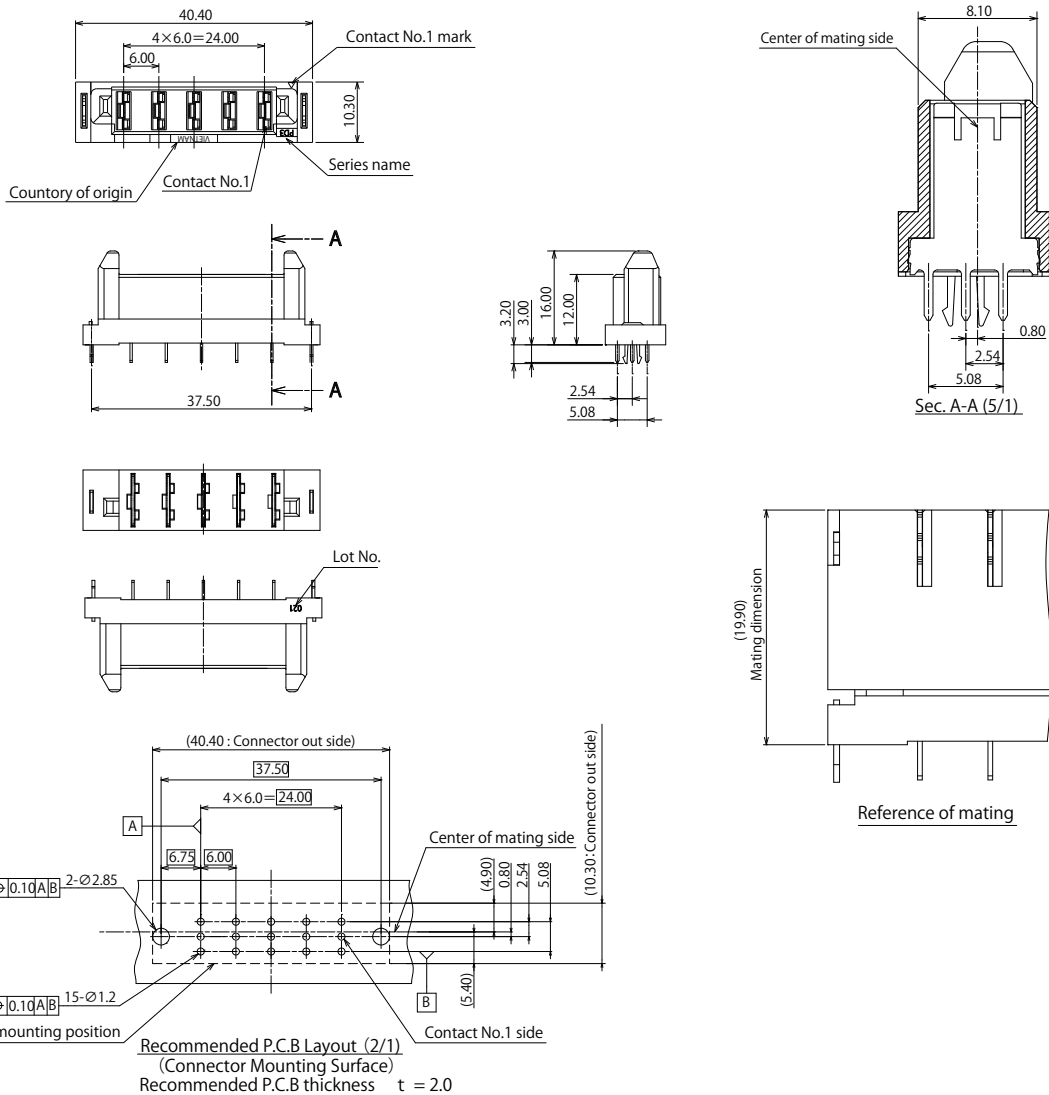
© Specifications and/or dimensions in this catalog are subject to change without notice.
Your checking the latest specifications with our drawings would be highly appreciated.

▶ Plug Connector (5 Power Contacts Type)

PD3-PR05-D41-FA



PD3-RS05-D41-FA



<https://www.connector.fujikura.com>