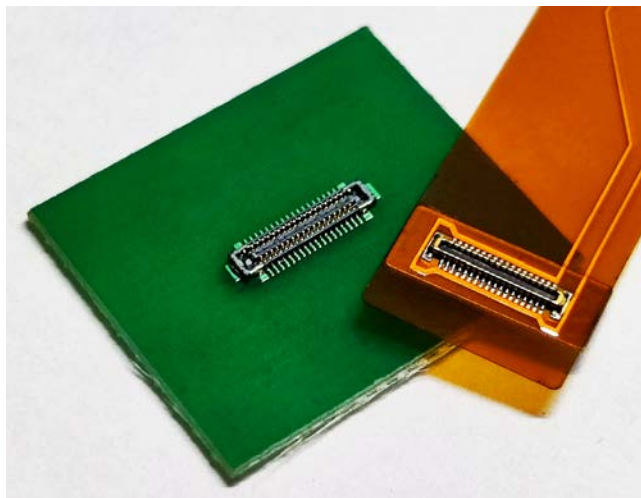


# 0.3mm pitch Board to Board(FPC) Connector

## FB3BA5 Series



### OUTLINE

FB3BA5 is a 0.3mm pitch board to board(FPC) connector with a stacking height of 0.5mm and a depth of 1.55mm.

### FEATURE

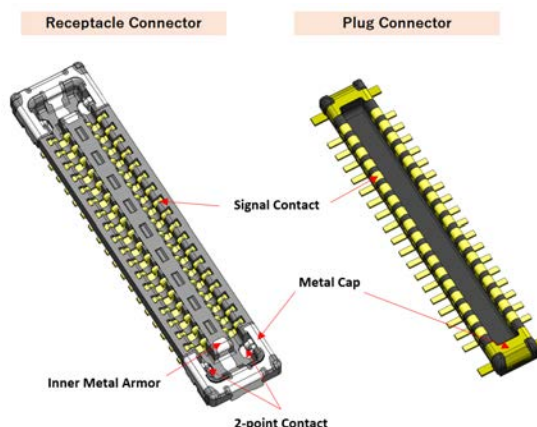
- Pitch : 0.3mm, Stacking height : 0.5mm, Width : 1.55mm
- Metal-cap structure prevents from the damage by mis-alignment mating.
- Inner metal armor structure further increases strength.
- Metal cap serve with up to 3.0A current available.
- High reliability with two point contact structure.
- Good click feel when connector is mated and high unmating force

### APPLICATIONS

Smartphone, Smartwatch, other compact portable devices

### SPECIFICATIONS

Number of contacts	Signal Contact : 24,36pin Metal-Cap : 2pin
Rated Current	Signal Contact : 0.4A/pin Metal-Cap : 3.0A/pin
Rated Voltage	AC30V (r.m.s.) / DC30V
Contact Resistance	Signal Contact : 30m Ω Max. Metal-Cap : 20m Ω Max.
Insulation Resistance	100M Ω min. at 200V DC
Dielectric Withstand Voltage	AC 200V (r.m.s.) /1 minute
Operating Temperature	-40°C~ +85°C



### MATERIAL/FINISH

Item	Material / Finish
Signal Contact	Copper Alloy / Au over Ni Plating
Metal-Cap	Copper Alloy / Au over Ni Plating
Housing	LCP Resin (UL94V-0) / Black



© Specifications and/or dimensions in this catalogue are subject to change without notice.  
Your catalogue checking the latest specifications with our drawings would be highly appreciated.

# ▶ 0.3mm pitch Board to Board(FPC) Connector

## Plug Connector

### FB3BA 5 - PAXX-3A

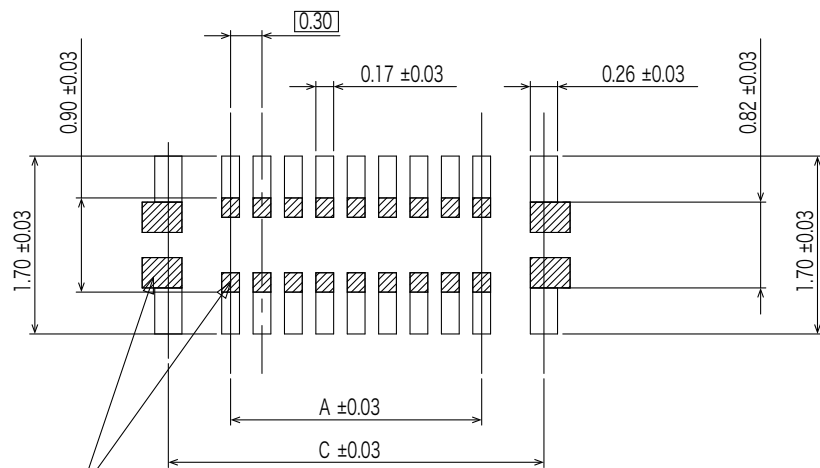
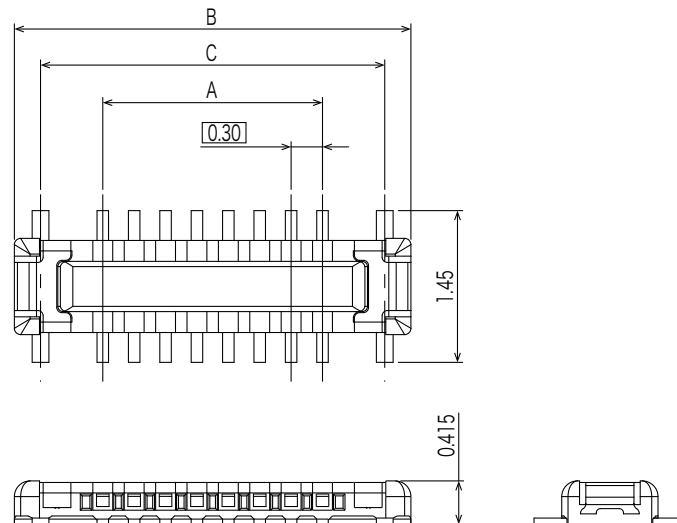
Series Name  
FB3BA : 0.30mm pitch 1.55mm depth  
Board to Board Connector

Mating Height  
5 : 0.5 mm

Contact Plating Specification  
3 : Au(Flash) over Ni Plating

Number of Signal Contact  
See Table-1

Mating style  
P : Plug



Reference P.C.B Layout

Table-1

Part Number	Number of Contact	A	B	C
FB3BA5-PA24-3A	24	3.30	4.99	4.49
FB3BA5-PA36-3A	36	5.10	6.79	6.29

© Specifications and/or dimensions in this catalogue are subject to change without notice.  
Your catalogue checking the latest specifications with our drawings would be highly appreciated.

<https://www.connector.fujikura.com>

# ▶ 0.3mm pitch Board to Board(FPC) Connector

## Receptacle Connector

### FB3BA 5 - RAXX-3A

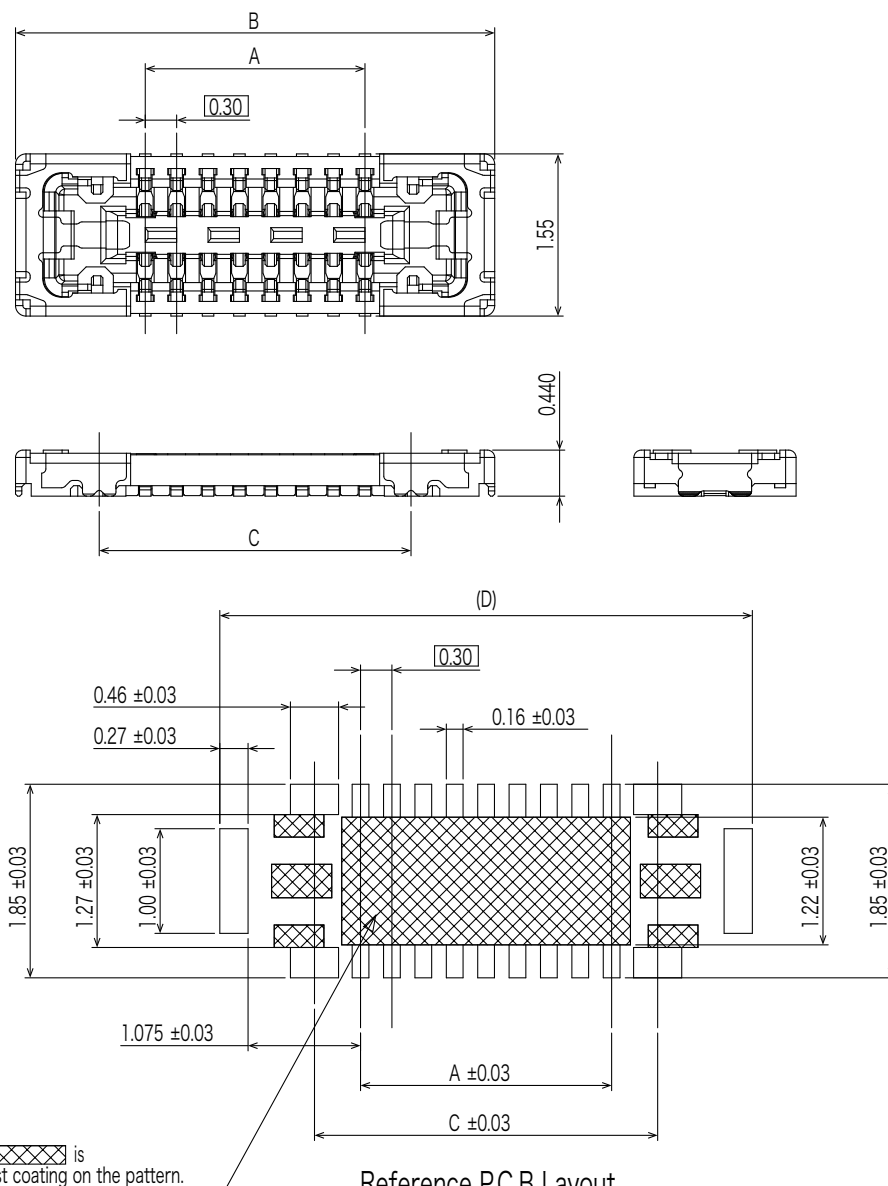
Series Name  
FB3BA : 0.30mm pitch 1.55mm depth  
Board to Board Connector

Mating Height  
5 : 0.5 mm

Contact Plating Specification  
3 : Au(Flash) over Ni Plating

Number of Signal Contact  
See Table-1

Mating style  
R : Receptacle



Reference P.C.B Layout

Table-2

Part Number	Number of Contact	A	B	C	D
FB3BA5-RA24-3A	24	3.30	5.78	4.18	5.99
FB3BA5-RA36-3A	36	5.10	7.58	5.98	7.79

© Specifications and/or dimensions in this catalogue are subject to change without notice.  
Your catalogue checking the latest specifications with our drawings would be highly appreciated.

<https://www.connector.fujikura.com>