

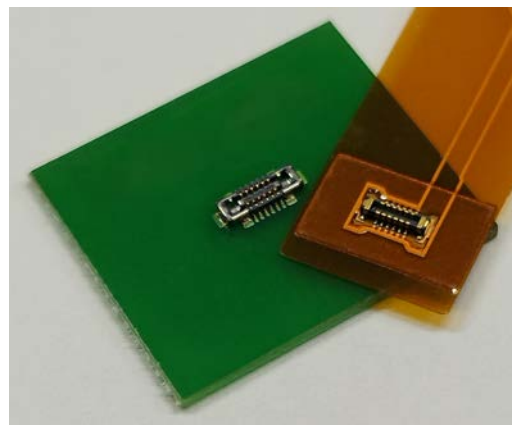
0.35mm pitch Board to Board(FPC) Connector

FB35AT8 Series



OUTLINE

FB35AT8 is a 0.35mm pitch board to board(FPC) connector with a stacking height of 0.8mm. Space-saving design with a depth of 1.65mm.



FEATURE

- Pitch 0.35mm, Width 1.65mm, Stacking height 0.8mm
- Number of Contact : 12, 16
- Metal-cap structure prevents from the damage by mis-alignment mating.
- Inner metal armor structure further increases strength
- The power contacts serve with up to 3A current available, which allows for more efficient use of the available connection contacts.
- High reliability with two point contact structure.
- Good click feel when connector is mated.

APPLICATIONS

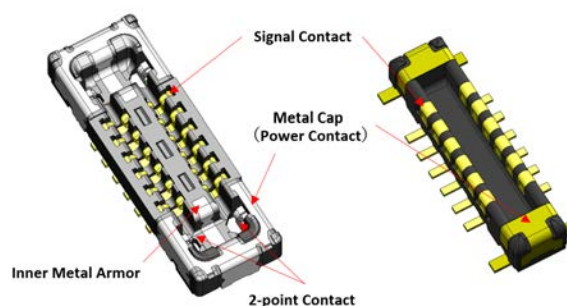
Smartphone, Smartwatch, other compact portable devices

SPECIFICATIONS

Rated Voltage	30V AC(r.m.s.) / 30V DC
Rated Current	0.4A Signal Contact 3.0A Power Contact
Insulation Resistance	100 MΩ min. at 200V DC
Dielectric Withstand Voltage	AC 200 V (r.m.s.) / 1 minute
Contact Resistance	30 m Ω max. Signal Contact 20 m Ω max. Power Contact
Operating Temperature	-40°C ~ +85°C

Receptacle Connector

Plug Connector



MATERIAL / FINISH



Item	Material / Finish
Signal Contact	Copper Alloy / Au over Ni Plating
Housing	LCP Resin (UL94V-0) / Black
Power Contact	Copper Alloy / Au over Ni Plating

© Specifications and/or dimensions in this catalogue are subject to change without notice.
Your catalogue checking the latest specifications with our drawings would be highly appreciated.

▶ 0.35mm pitch Board to Board(FPC) Connector

Plug Connector

FB35AT 8 - PAXX-3A

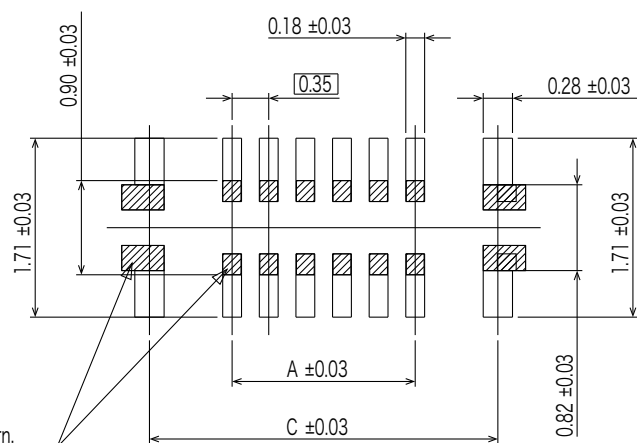
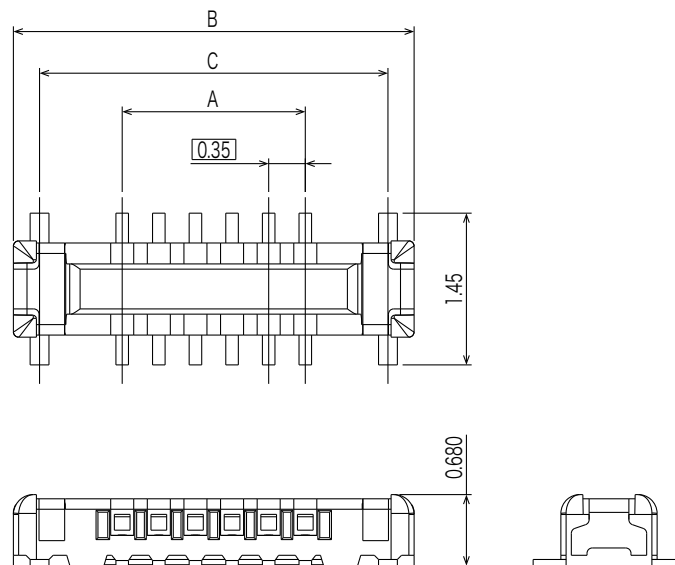
Series Name
FB35AT : 0.35mm pitch, 1.65mm
depth Board to Board
Connector

Mating Height
8 : 0.8mm height

Contact Plating
3 : Au(Flash) over Ni plating

Number of Contact
See Table-1

Mating Style
P : Plug



This hatching area  is
cover lay or resist coating on the pattern.

Recommended P.C.B Layout

Table-1

Part Number	Number of Contact	A	B	C
FB35AT8-PA12-3A	12	1.75	3.83	3.33
FB35AT8-PA16-3A	16	2.45	4.53	4.03

© Specifications and/or dimensions in this catalogue are subject to change without notice.
Your catalogue checking the latest specifications with our drawings would be highly appreciated.

<https://www.connector.fujikura.com>

▶ 0.35mm pitch Board to Board(FPC) Connector

Receptacle Connector

FB35AT 8 - RAXX-3A

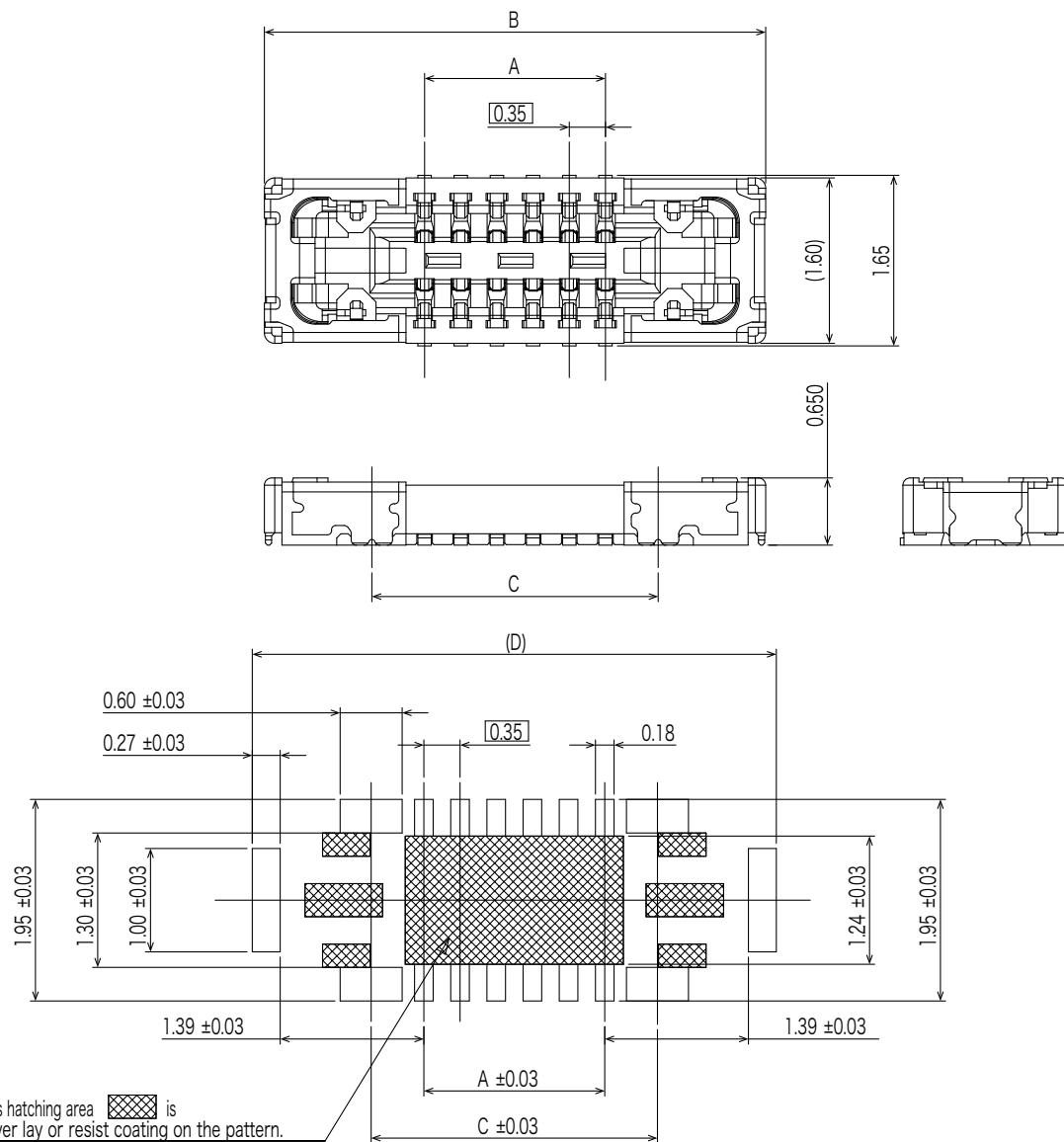
Series Name
FB35AT : 0.35mm pitch, 1.65mm
depth Board to Board
Connector

Mating Height
8 : 0.8mm height

Contact Plating
3 : Au(Flash) over Ni plating

Number of Contact
See Table-2

Mating Style
R : Receptacle



Recommended P.C.B Layout

Table-2

Part Number	Number of Contact	A	B	C	D
FB35AT8-RA12-3A	12	1.75	4.85	2.77	5.07
FB35AT8-RA16-3A	16	2.45	5.55	3.47	5.77

© Specifications and/or dimensions in this catalogue are subject to change without notice.
Your catalogue checking the latest specifications with our drawings would be highly appreciated.

<https://www.connector.fujikura.com>