

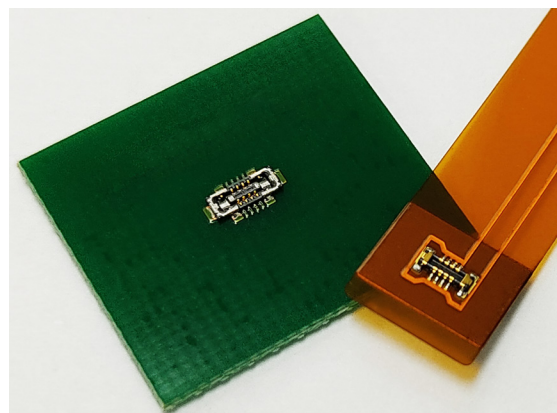
0.35mm pitch Board to Board(FPC) Connector

FB35AT5 Series

DDK Ltd.

OUTLINE

FB35AT5 is a 0.35mm pitch board to board(FPC) connector with a stacking height of 0.5mm. Space-saving design with a depth of 1.65mm.



FEATURE

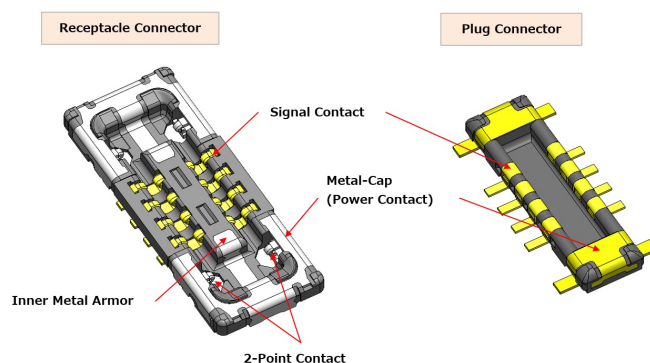
- Pitch 0.35mm, Width 1.65mm, Stacking height 0.5mm
- Number of Contact : 8
- Metal-cap structure prevents from the damage by mis-alignment mating.
- Inner metal armor structure further increases strength
- The power contacts serve with up to 3A current available, which allows for more efficient use of the available connection contacts.
- High reliability with two point contact structure.
- Good click feel when connector is mated.

APPLICATIONS

Smartphone, Smartwatch, other compact portable devices

SPECIFICATIONS

Rated Voltage	30V AC(r.m.s.) / 30V DC
Rated Current	0.4A Signal Contact 3.0A Power Contact
Insulation Resistance	100 M Ω min. at 200V DC
Dielectric Withstand Voltage	AC 200 V (r.m.s.) / 1 minute
Contact Resistance	30 m Ω max. Signal Contact 20 m Ω max. Power Contact
Operating Temperature	-40°C~ +85°C



MATERIAL / FINISH



Item	Material / Finish
Signal Contact	Copper Alloy / Au over Ni Plating
Housing	LCP Resin (UL94V-0) / Black
Power Contact	Copper Alloy / Au over Ni Plating

© Specifications and/or dimensions in this catalogue are subject to change without notice.
Your catalogue checking the latest specifications with our drawings would be highly appreciated.

▶ 0.35mm pitch Board to Board(FPC) Connector

Plug Connector

FB35AT 5 - PAXX-3A

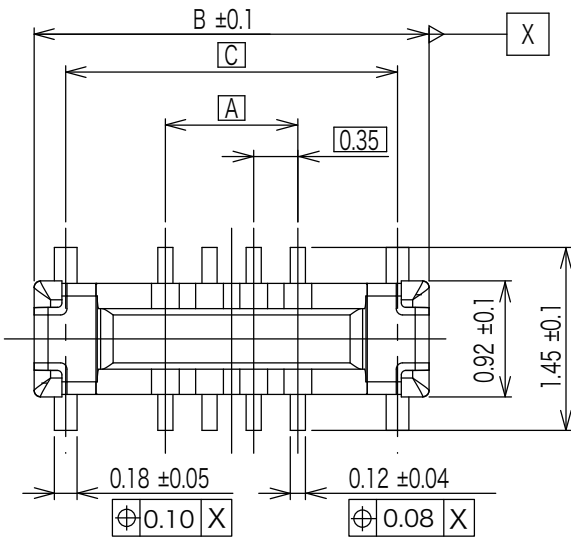
Series Name
 FB35AT : 0.35mm pitch, 1.65mm
 depth Board to Board
 Connector

Mating Height
 5 : 0.5mm height

Contact Plating
 3 : Au(Flash) over Ni plating

Number of Contact
 See Table-1

Mating Style
 P : Plug



GENERAL TOLERANCE	
X < 5	±0.15
5 ≤ X < 15	±0.25
15 ≤ X	±0.40
ANGLE	±3°

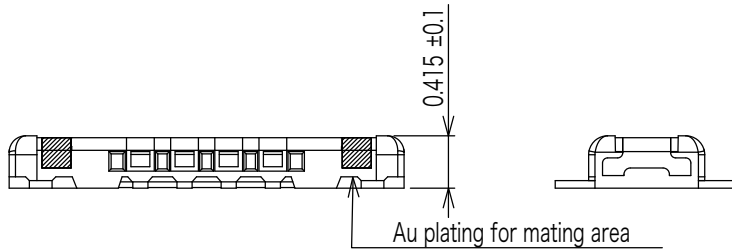


Table-1

Part Number	Number of Contact	A	B	C
FB35AT5-PA8-3A	8	1.05	3.13	2.63

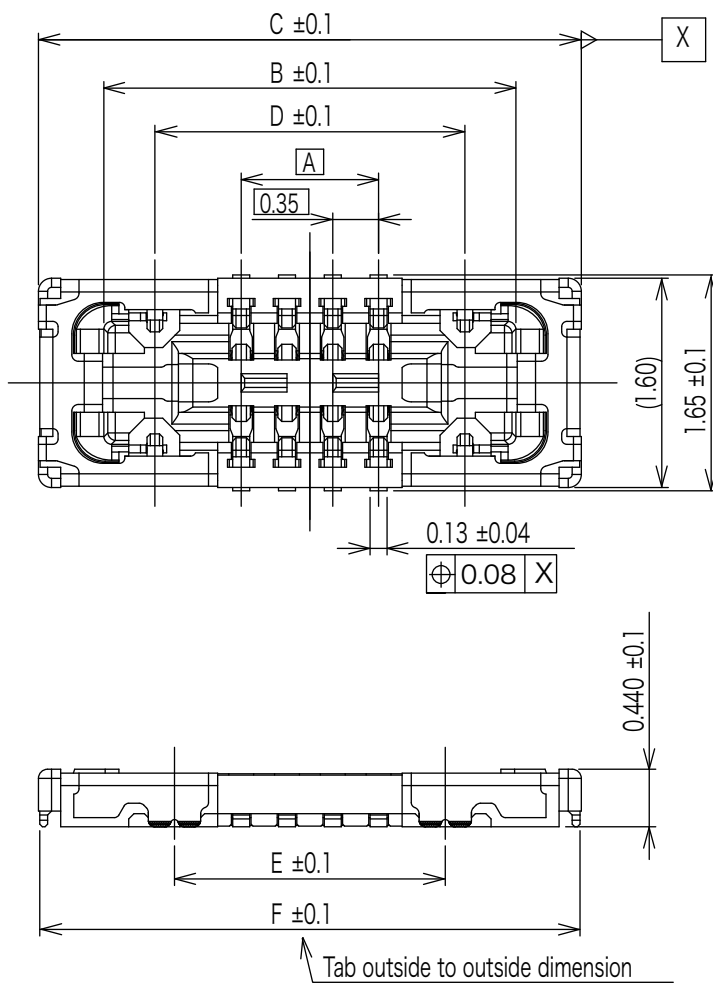
© Specifications and/or dimensions in this catalogue are subject to change without notice.
 Your catalogue checking the latest specifications with our drawings would be highly appreciated.

▶ 0.35mm pitch Board to Board(FPC) Connector

Receptacle Connector

FB35AT 5 - RAXX-3A

Series Name FB35AT : 0.35mm pitch, 1.65mm depth Board to Board Connector	Contact Plating 3 : Au(Flash) over Ni plating
Mating Height 5 : 0.5mm height	Number of Contact See Table-2
	Mating Style R : Receptacle



GENERAL TOLERANCE	
X < 5	±0.15
5 ≤ X < 15	±0.25
15 ≤ X	±0.40
ANGLE	±3°

Table-2

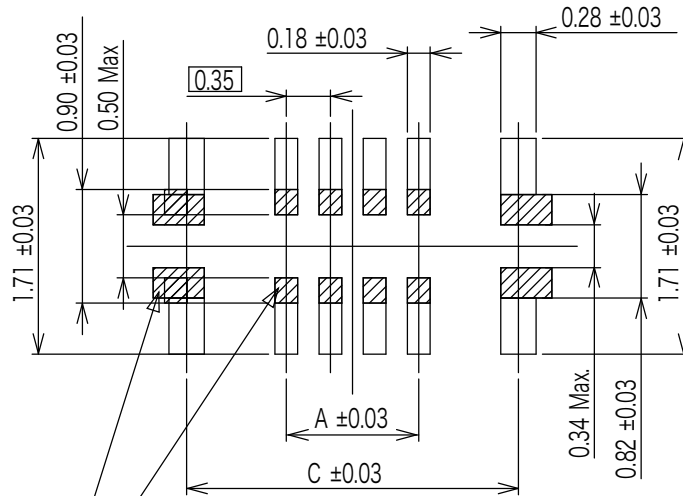
Part Number	Number of Contact	A	B	C	D	E	F	G
FB35AT5-RA8-3A	8	1.05	3.15	4.15	2.37	2.07	4.13	4.37


© Specifications and/or dimensions in this catalogue are subject to change without notice.
Your catalogue checking the latest specifications with our drawings would be highly appreciated.

▶ 0.35mm pitch Board to Board(FPC) Connector

Recommended P.C.B. Layout

Plug Connector



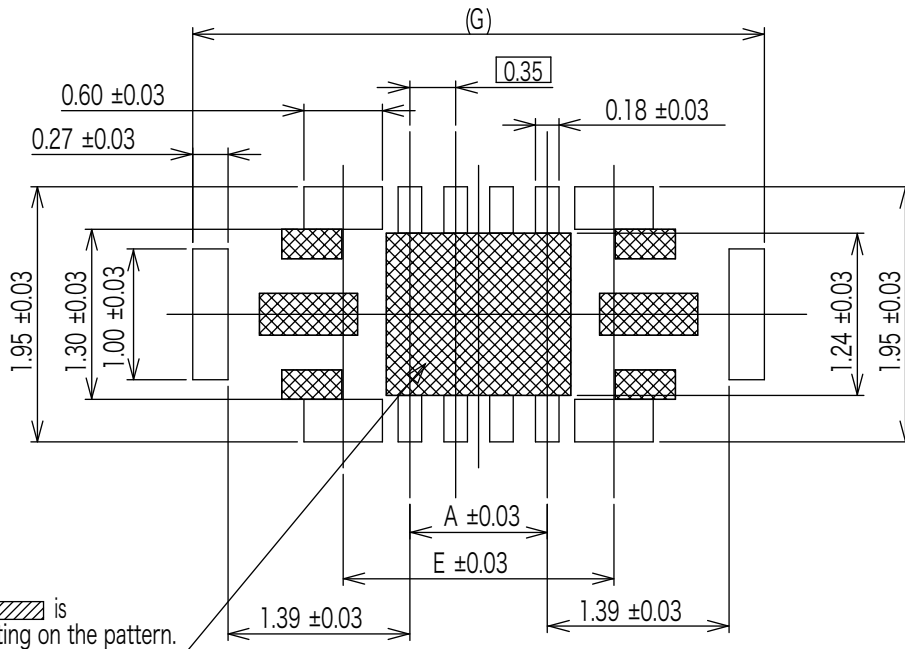
This hatching area  is cover lay or resist coating on the pattern.

推奨基板寸法

Table-1

Part Number	Number of Contact	A	B	C
FB35AT5-PA8-3A	8	1.05	3.13	2.63

Receptacle Connector



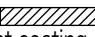
This hatching area  is cover lay or resist coating on the pattern.

Table-2

Part Number	Number of Contact	A	B	C	D	E	F	G
FB35AT5-RA8-3A	8	1.05	3.15	4.15	2.37	2.07	4.13	4.37

© Specifications and/or dimensions in this catalogue are subject to change without notice.
Your catalogue checking the latest specifications with our drawings would be highly appreciated.