

# Micro-Miniature Coaxial Connectors

## MMCXF Series



Characteristic  
Impedance

50  $\Omega$

Lock Type

Push on

Mounting  
Type

DIP, SMT

### OUTLINE

High vibration resistance and impact resistance.

Compatible with the conventional MMCX type, high reliability by adopting the spring contact. It is adopted for headphones with a high insertion and removed frequency.

### APPLICATIONS

Antenna, Base Station, GPS(Global Positioning System), Telecommunication, Wireless Application, Wireless LAN, Earphone, Drive Recorders, Door Mirrors

### SPECIFICATIONS

Characteristic Impedance	50 $\Omega$
Rated Voltage	335VAC(r.m.s.)
Dielectric Withstand Voltage	500V AC(r.m.s.)for1 minute
Insulation Resistance	1.000M $\Omega$ Min. at 500V DC
Contact Resistance	Center Contact 5m $\Omega$ Max. Outer Contact 2.5m $\Omega$ Max.
Frequency Range	DC to 6GHz
V.S.W.R	1.2 Max.
Operating Temperature	-55 ~ +85°C
Vibration Resistance, Impact Resistance	Vibration: 196 m / s <sup>2</sup> (20G) Impact: 735 m / s <sup>2</sup> (75G)

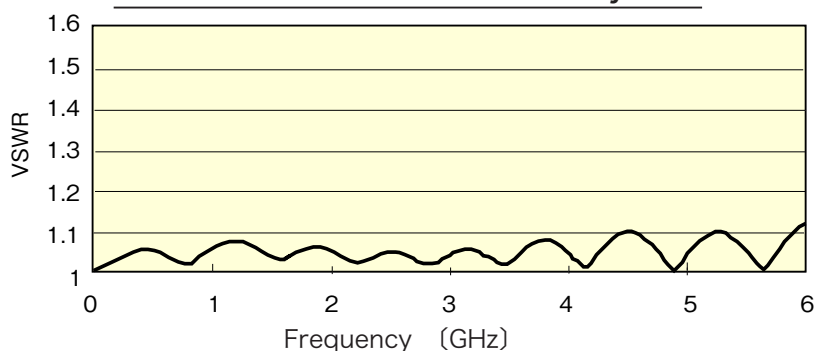
### MATERIAL/FINISH

Description	Material/Finish
Contact	Copper Alloy / Au Plating
Outer Conductor	Copper Alloy / Au Plating
Ferrule	Copper Alloy / Ni Plating
Insulator	PTFE



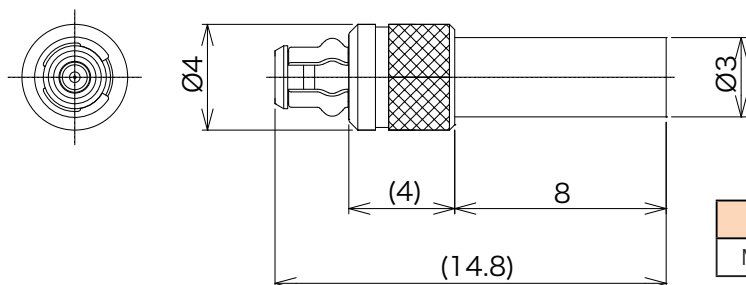
\* 1:The specifications are typical but may not apply to all connectors. Please check the specifications on each item with its drawing from us when you use.  
2:To ensure connection reliability, we recommend that the mating connector be made by us.

### MMCXF-SP-178BU-CR1 Double Ended Cable Assembly

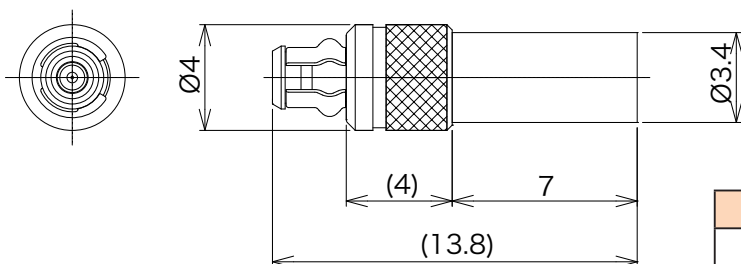


© Please acknowledge that the specification etc. of this catalog might change by the improvement etc. without a previous notice.  
Moreover, the characteristic and the specification of the published product are the reference values.  
Please verify the latest specifications with our drawings.

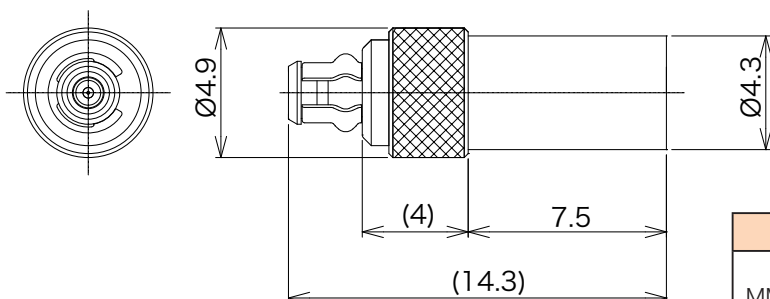
# ▶ Straight Plug Connectors



P / N	Applicable Cable
MMCXF-SP-178BU-CR1	RG-178B/U

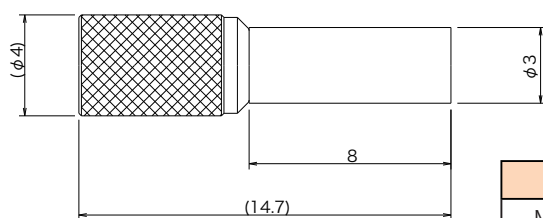
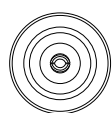


P / N	Applicable Cable
MMCXF-SP-188AU-CR1	RG-188A/U

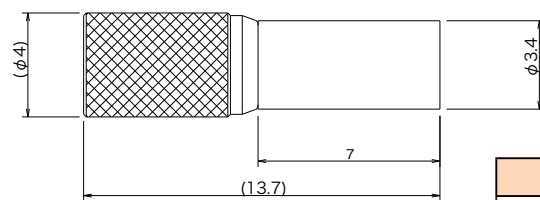
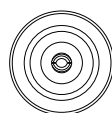


P / N	Applicable Cable
MMCXF-SP-1.5DHQS-CR1	1.5D-2V 1.5D-2W 1.5D-HQ-SUPER
MMCF-SP-1DQEHB-CR1	1D-QEHB

# ▶ Straight Jack Connectors

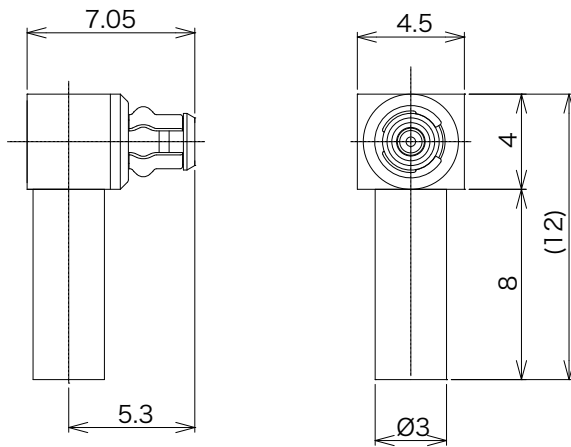


P / N	Applicable Cable
MMCX-SJ-178BU-CR1	RG-178B/U

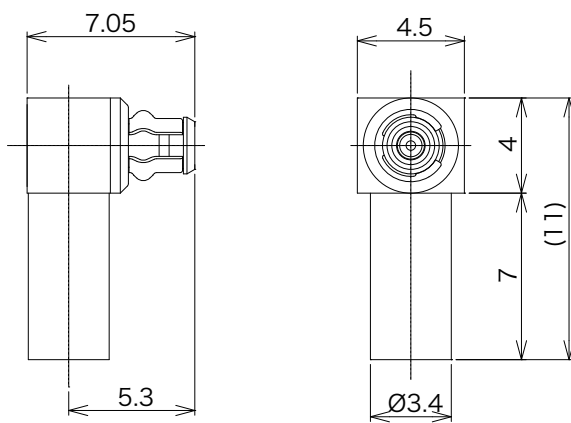


P / N	Applicable Cable
MMCX-SJ-188AU-CR1	RG-188A/U

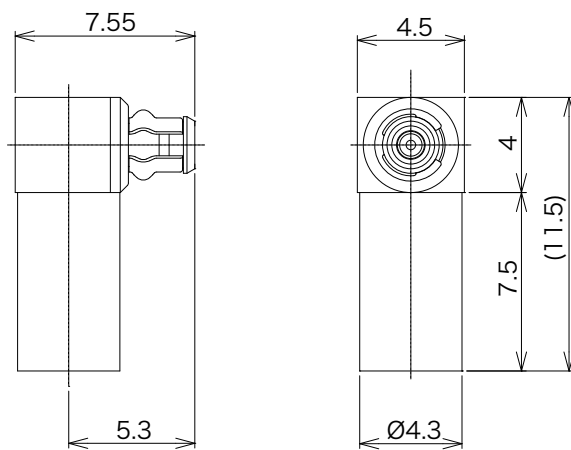
## ▶ Right Angle Connectors



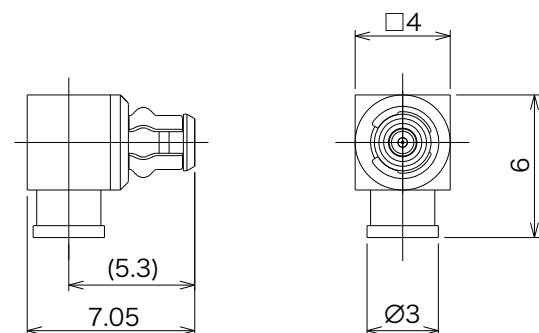
P / N	Applicable Cable
MMCXF-LP-178BU-CR1	RG-178B/U



P / N	Applicable Cable
MMCXF-LP-188AU-CR1	RG-188A/U



P / N	Applicable Cable
MMCXF-LP-1.5DHQS-CR1	1.5D-2V 1.5D-2W 1.5D-HQ·SUPER

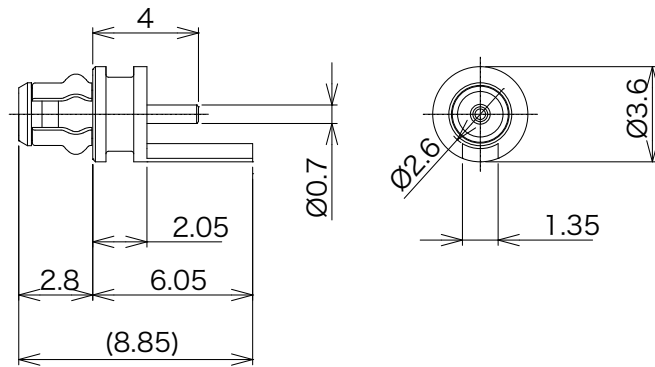


P / N	Applicable Cable
MMCXF-LP-FCCAV1-SO	UT-85 Semi-flexible

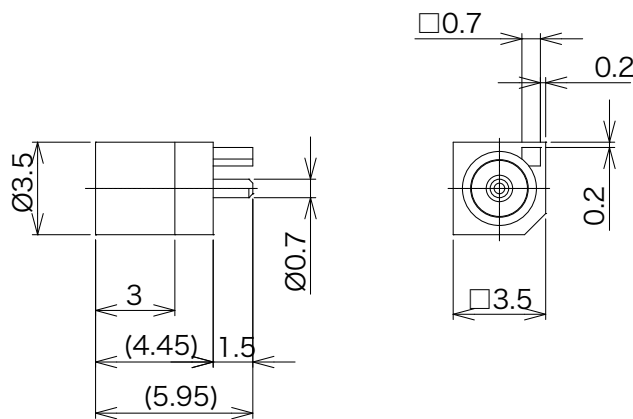
© Please acknowledge that the specification etc. of this catalog might change by the improvement etc. without a previous notice.  
Moreover, the characteristic and the specification of the published product are the reference values.  
Please verify the latest specifications with our drawings.

<https://www.connector.fujikura.com>

## ▶ Receptacle for earphone



P / N
MMCXF-LPR-PS-3-D1

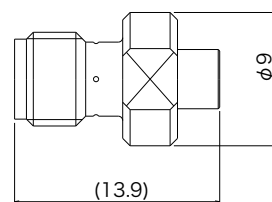
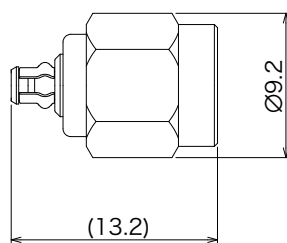


P / N
MMCX-LR-PS-2

## ▶ Conversion Adapter Connectors

P/N : DMP-SA-MMCXFP

P/N : DMJ-SA-MMCXJ

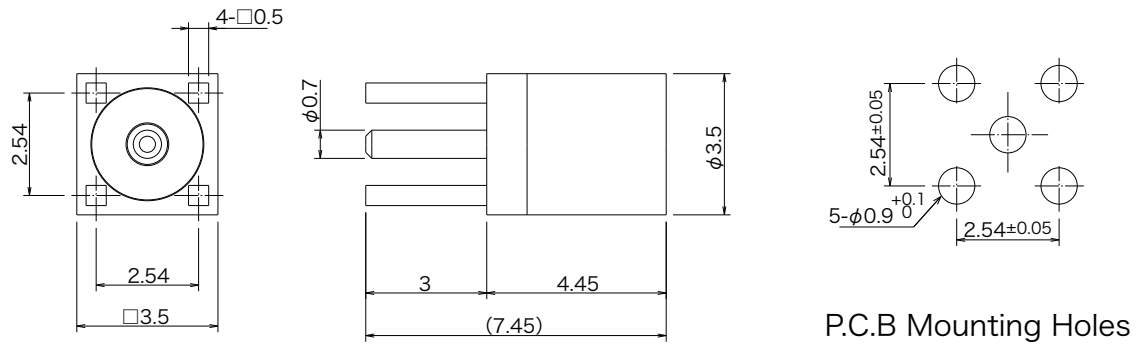


© Please acknowledge that the specification etc. of this catalog might change by the improvement etc. without a previous notice.  
Moreover, the characteristic and the specification of the published product are the reference values.  
Please verify the latest specifications with our drawings.

<https://www.connector.fujikura.com>

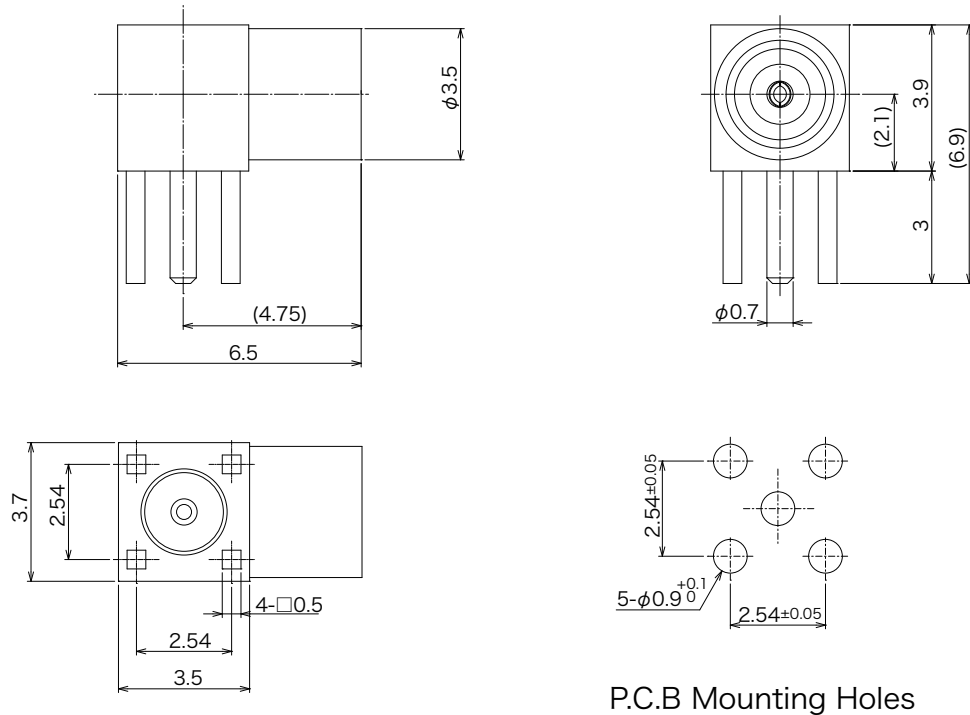
## ▶ Straight Receptacle Connectors

P/N : MMCX-SR-PC



## ▶ Right Angle Receptacle Connectors

P/N : MMCX-LR-PC

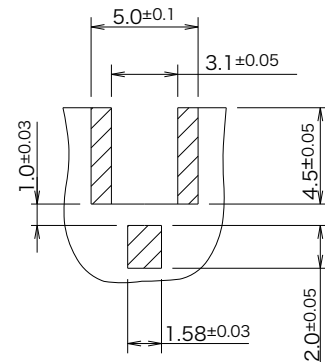
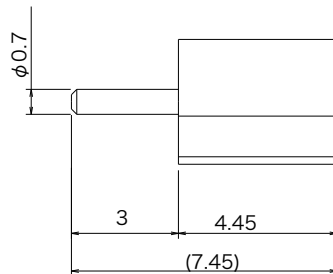
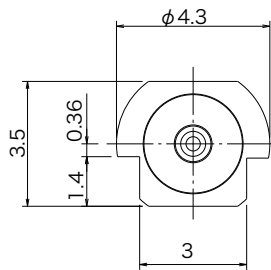


## ▶ Right Angle Receptacle Connectors

### P/N : MMCX-LR-PS

P / N	Contact	Outer Conductor	Packaging style	Quantity
MMCX-LR-PS	Au	Au	Tray	1 pcs
MMCX-LR-PS-1000			Embossed packaging (1000pcs / reel)	1 reel

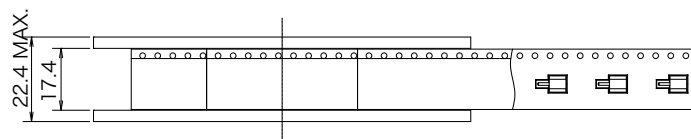
※ SMT-ready coaxial connector.



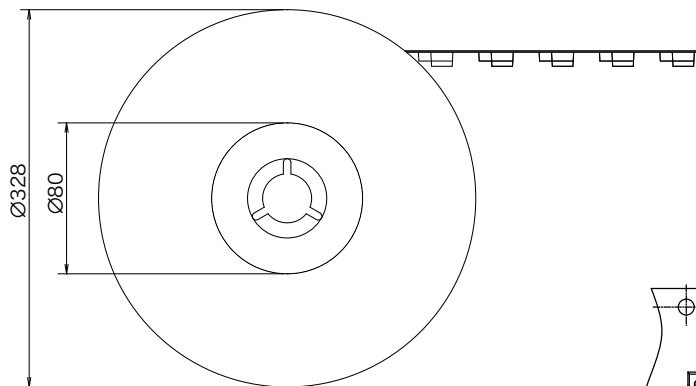
P.C.B Pattern

## ▶ Packaging Specifications

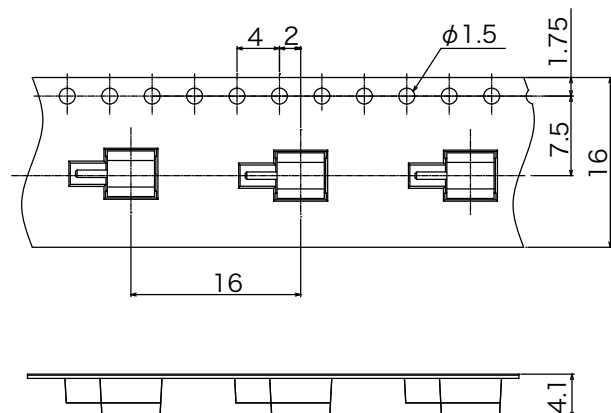
### ■ Reel Dimensions



➔ User direction of feed



### ■ Emboss Tape Dimensions



© Please acknowledge that the specification etc. of this catalog might change by the improvement etc. without a previous notice.  
Moreover, the characteristic and the specification of the published product are the reference values.  
Please verify the latest specifications with our drawings.

<https://www.connector.fujikura.com>