

Low Profile Push-On Coaxial Connectors

MCX Series

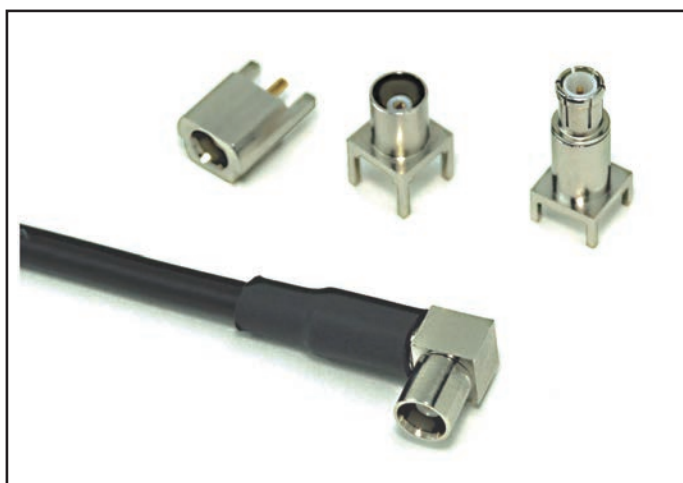
Frequency
Range
DCto6GHz

Characteristic
Impedance
50 Ω

Applicable
Cable
·1.5D-HQ · SUPER
·1.5D-QEHV(TA)

Lock Type
Push On

Mounting
Type
DIP



OUTLINE

MCX series is a low profile push-on connector which conforms to IEC61169-36.

It is a more space-saving design than the SMB connector and suitable for the equipment which requires the limited space.

APPLICATION

GPS, Base Station, Telecom, Electric Toll
Collection System, Portabe Navigation Device(PND)

SPECIFICATION

| Item | Specification |
|---------------------------------|------------------------------------|
| Characteristic Impedance | 50 Ω |
| Rated Voltage | 335VAC(r.m.s.) |
| Dielectric Withstanding Voltage | 500V AC(r.m.s.)for1 minute |
| Insulation Resistance | 1.000M Ω Mim. at 500V DC |
| Contact Resistance | Center Contact : 5m Ω Max. |
| | Outer Contact : 2.5m Ω Max. |
| Frequency Range | DC to 6GHz |
| Operating Temperature | -55 ~ +85°C |

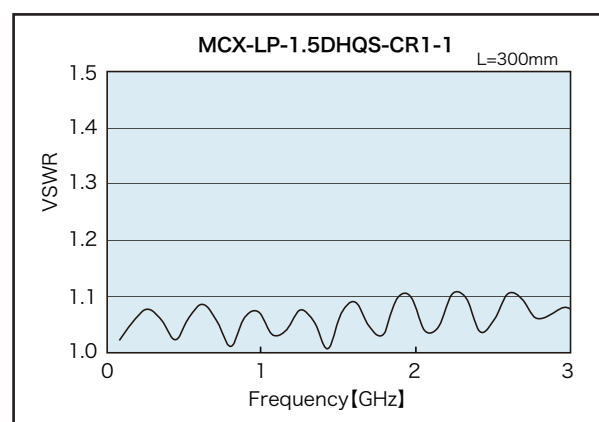
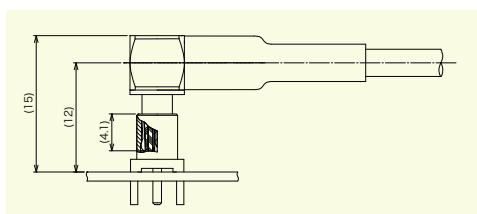
* The specifications are typical but may not apply to all connectors. Please check the specifications on each item with its drawing from us when you use.

MATERIAL/FINISH



| Part No. | Material/Finish |
|-----------------|---------------------------|
| Contact | Copper Alloy / Au Plating |
| Insulator | PTFE |
| Outer Conductor | Copper Alloy / Ni Plating |

Mating Height (Reference)
MCX-SR-PC and MCX-LP-1.5DHQS-CR1-1

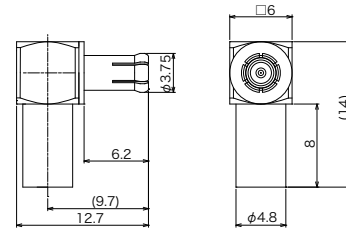


© Please acknowledge that the specification etc. of this catalog might change by the improvement etc. without a previous notice.
Moreover, the characteristic and the specification of the published product are the reference values.
Please confirm the content with the latest delivery specifications when you use the product.

▶ Straight Plug for Cable

MCX-LP-1.5DHQS-CR1-1

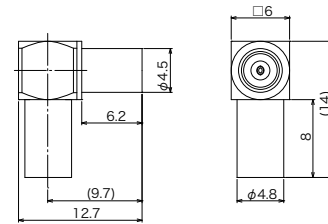
| | |
|--------------------------|--|
| Characteristic Impedance | 50 Ω |
| Applicable Connector | MCX Style Jack |
| Applicable Cable | 1.5D-HQ Super(Fujikura) or Equivalence 1.5D-QEHV(AT) Super(Shikoku Electric) or Equivalence |



▶ Straight Jack for Cable

MCX-LJ-1.5DHQS-CR1-1

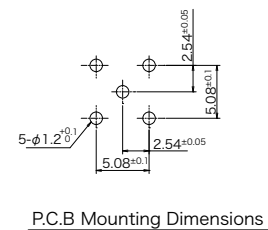
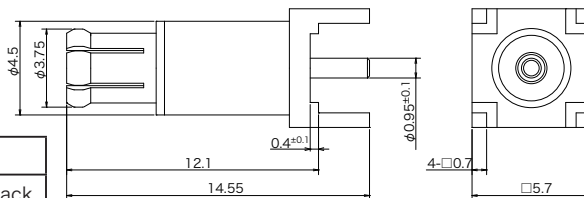
| | |
|--------------------------|--|
| Characteristic Impedance | 50 Ω |
| Applicable Connector | MCX Style Plug |
| Applicable Cable | 1.5D-HQ Super(Fujikura) or Equivalence 1.5D-QEHV(AT) Super(Shikoku Electric) or Equivalence |



▶ Straight Receptacle for Panel

MCX-SPR-PC

| | |
|--------------------------|----------------|
| Characteristic Impedance | 50 Ω |
| Applicable Connector | MCX Style Jack |

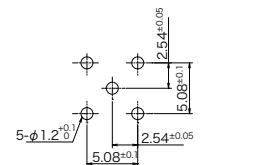
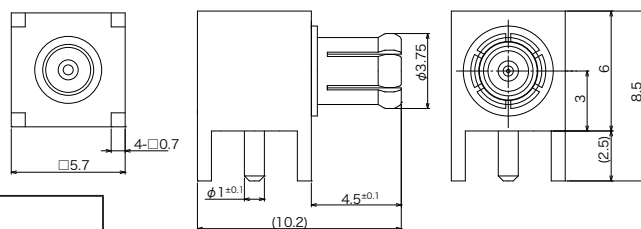


P.C.B Mounting Dimensions

▶ Angle Receptacle for Panel

MCX-LPR-PC

| | |
|--------------------------|----------------|
| Characteristic Impedance | 50 Ω |
| Applicable Connector | MCX Style Jack |

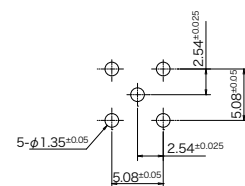
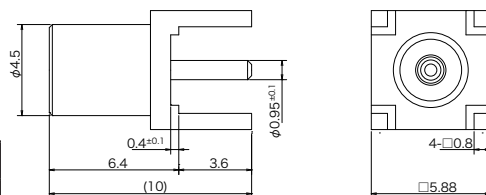


P.C.B Mounting Dimensions

▶ Straight Jack for Panel

MCX-SR-PC

| | |
|--------------------------|----------------|
| Characteristic Impedance | 50 Ω |
| Applicable Connector | MCX Style Plug |



P.C.B Mounting Dimensions

© Please acknowledge that the specification etc. of this catalog might change by the improvement etc. without a previous notice.
Moreover, the characteristic and the specification of the published product are the reference values.
Please confirm the content with the latest delivery specifications when you use the product.