

BNC (Isolated) Style Connector (Panel Mounting Type)

31 Series



FEATURES

- ◆ Panel mounting type BNC style receptacle connector.
- ◆ The outer conductor and mounting panel are isolated.
- ◆ The ground contact is installed along the outer conductor and united with insulator adjacent to the contact.

APPLICATIONS

Computer, Communication and Medical equipments

CONFORMING STANDARD

JIS-C-5412, MIL-PRF-39012

SPECIFICATIONS

Characteristic Impedance	Unmatched
Rated Voltage	500VAC(r.m.s.)
Dielectric Withstand Voltage	1500V AC(r.m.s.) for 1 minute
Insulation Resistance	5000M Ω Min. at 500V DC
Contact Resistance	5m Ω max.
Operating Temperature	-45 ~ +120°C

* The specifications are typical but may not apply to all connectors. Please check the specifications on each item with its drawing from us when you use.

MATERIAL/FINISH



Item	Material / Finish
Contact(Female)	Copper Alloy / Ag or Au Plating
Outer Conductor	Zinc Alloy Diecast / Ni Plating
Insulator	PPO Resin (UL94V-0) / White

© Specifications and/or dimensions in this catalog are subject to change without notice.
Please verify the latest specifications with our drawings.

▶ BNC Style Receptacle

31-10-CF 31-10-CAu-CF

Round Pin Contact



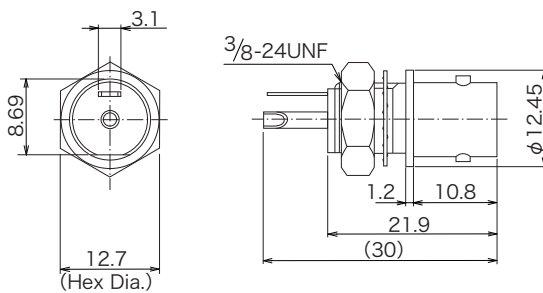
Part Number	Contact	Outer Conductor
31-10-CF	Ag Plating	Ni Plating
31-10-CAu-CF	Au Plating	Ni Plating

31-10T-D2

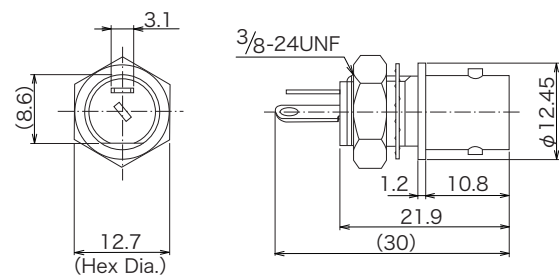
Tuning fork Contact
(Low-cost Type : Press Contact)



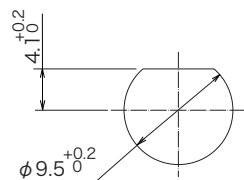
Part Number	Contact	Outer Conductor
31-10T-D2	Ag Plating	Ni Plating



Panel Thickness : 4.3mm max.



Panel Thickness : 4.3mm max.



Panel Mounting Dimensions

(Note) When mounting this connector as above, the stud pins are located up and below.
Recommend 115.6 to 135.2 N · cm for nut tightening torque.