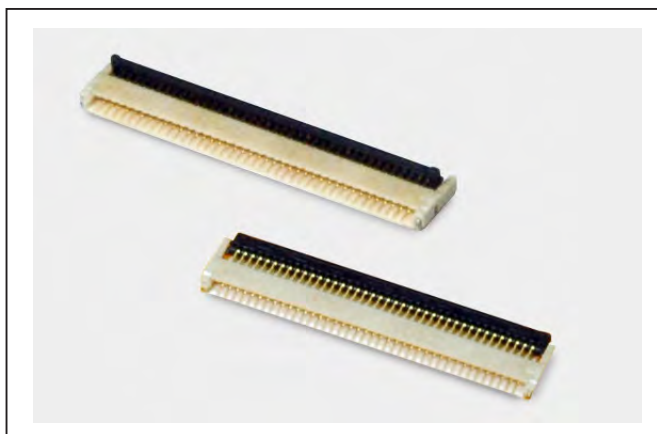


0.5mm pitch low profile FPC LIF back-lock connector

RoHS2

FF14C Series

第一电子工业株式会社



OUTLINE

The FF14C series low profile FPC LIF connector has a back-lock mechanism with a 0.5mm contact pitch. It mates with a standard FPC circuit of 0.3mm thick.

The upper contact is utilized as the electrical contact for the FPC material.

The connector height has a low profile of 1.0mm.

FEATURES

- DDK's original cam-type "Back-lock" system ensures reliable operation of the LIF Connector and continued retention from inadvertent upward pulling of the FPC.
- Back-lock structure ensures retention from inadvertent from upward pulling of the FPC.
- The upper contact is used for electrical contact with the FPC circuit.
- Connectors are delivered unlocked, so the lock lever does not need to be opened before operation.
- Supplied with emboss tape for automatic mounting.
- The housing and lock lever are made of heat-resistant resin making the FPC connector compatible with lead-free reflow soldering.

APPLICATIONS

Mobile phone, DSC, Notebook PC, PDA and other compact devices

SPECIFICATIONS

Rated Voltage	50V AC (r.m.s.)
Rated Current	0.5A / Contact
Dielectric Withstand Voltage	200V AC(r.m.s.) /1 minute
Insulation Resistance	100 M Ω min. at 500V DC
Contact Resistance	50m Ω max.

MATERIAL/FINISH



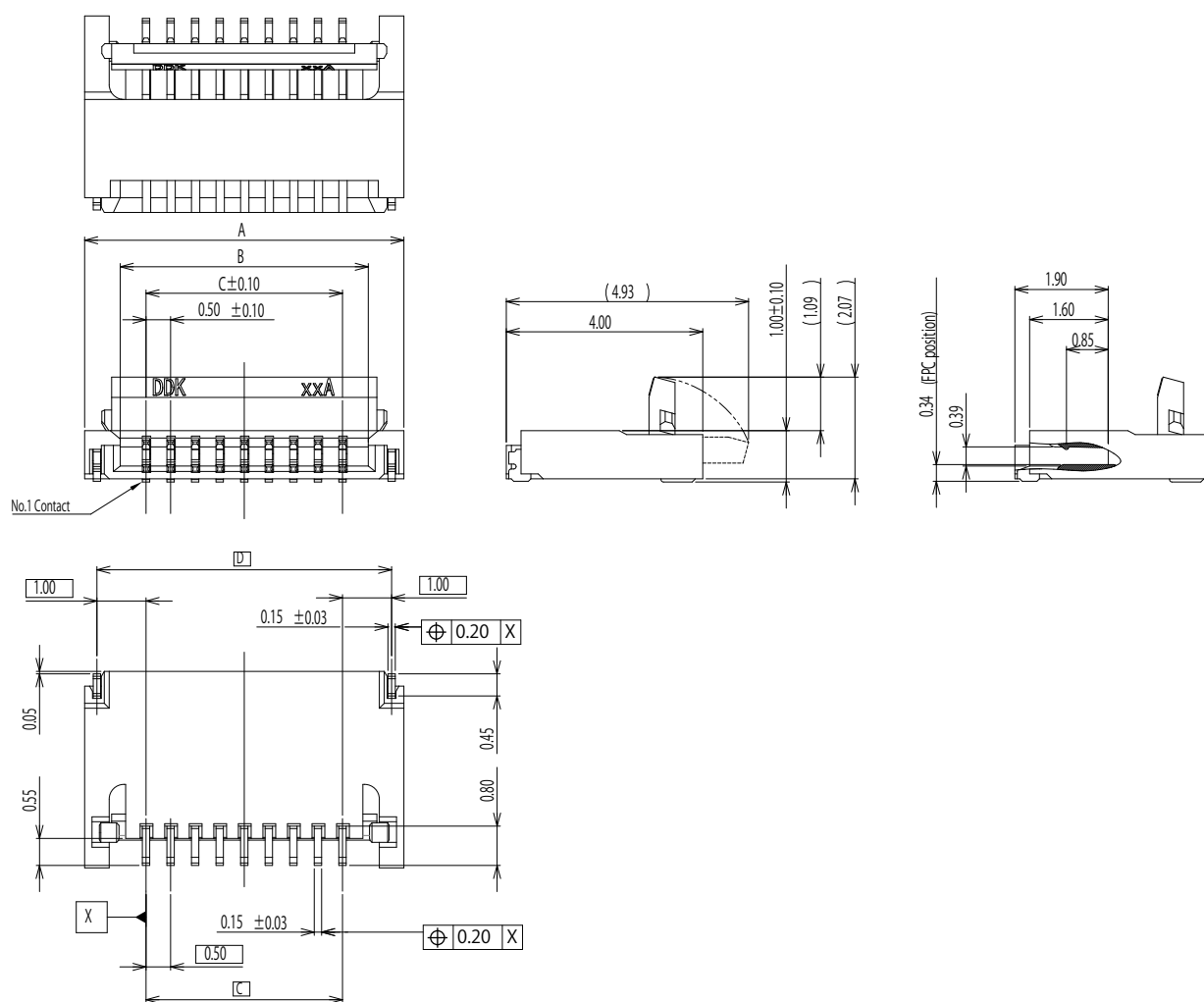
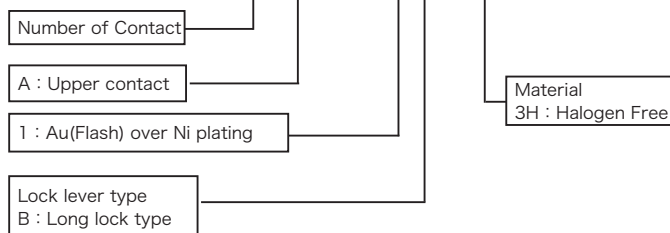
Item	Material / Finish
Contact	Copper Alloy / Au (Flash) over Ni
Housing	LCP Resin (UL94V-0) / Ivory
Lock Lever	PPS Resin (UL94V-0) / Black

© Specifications and/or dimensions in this catalog are subject to change without notice.

Please verify the latest specifications with our drawings.

▶ Long lock Type

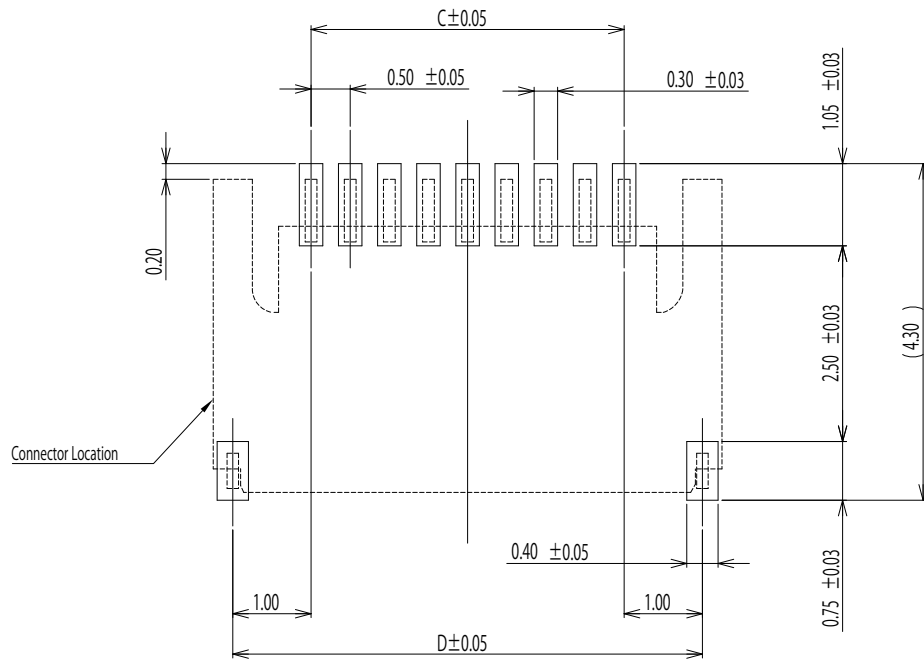
FF14C- A-R11B-3H



Part Number	Number of Contact	A	B	C	D	E
FF14C-40A-R11B-3H	40	22.0	20.6	19.5	21.5	20.5
FF14C-50A-R11B-3H	50	27.0	25.6	24.5	26.5	25.5

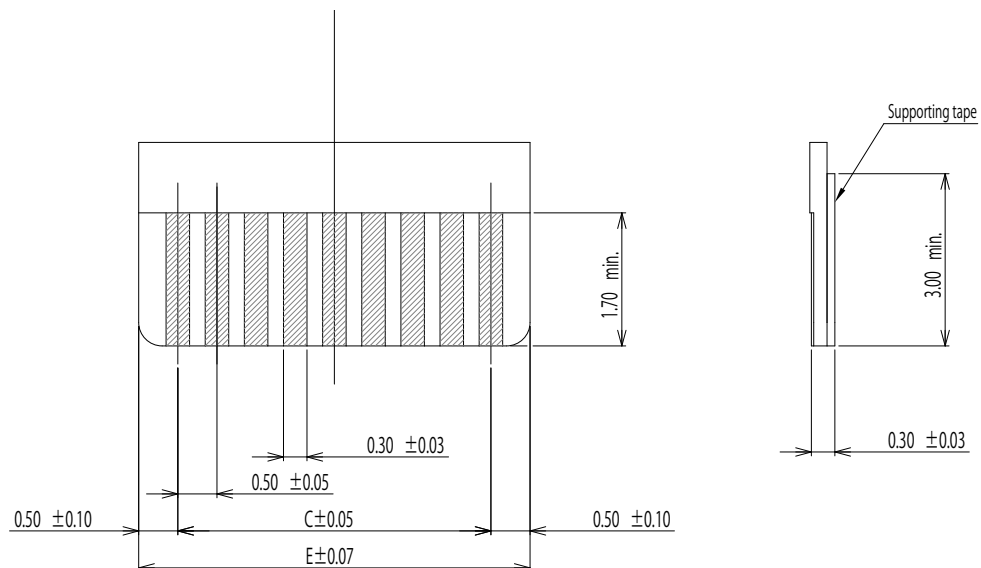
▶ FF14C Mounting Dimensions

■ Recommended P.C.B. pattern lay-out



Please refer to page 2 for dimensions of C and E.

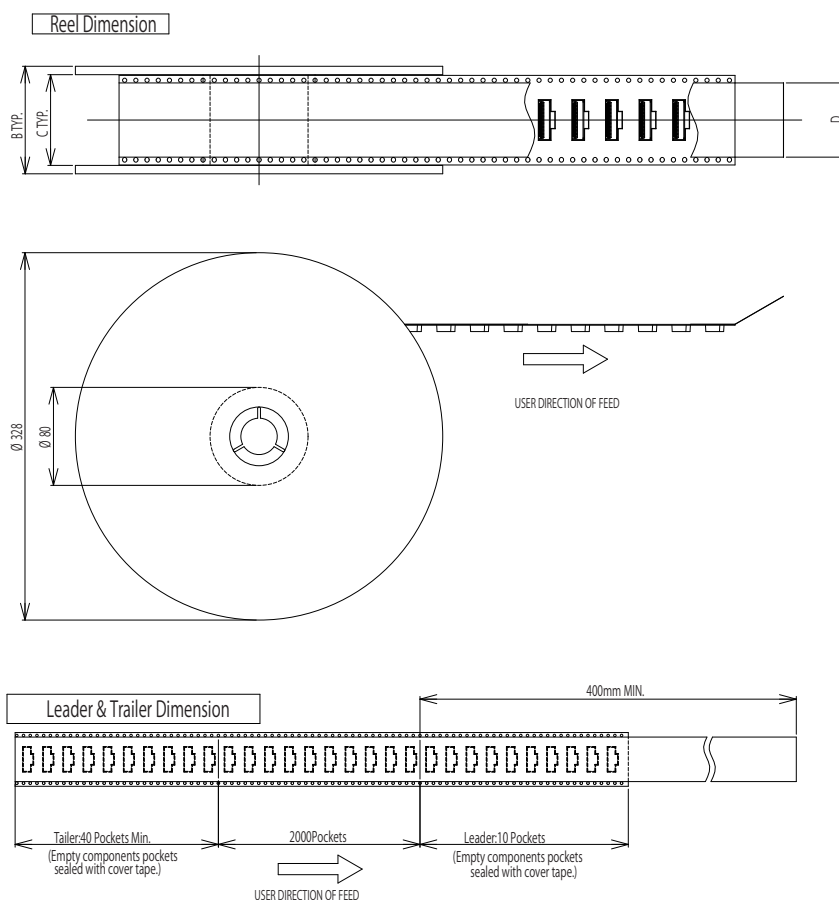
■ Applicable FPC dimensions



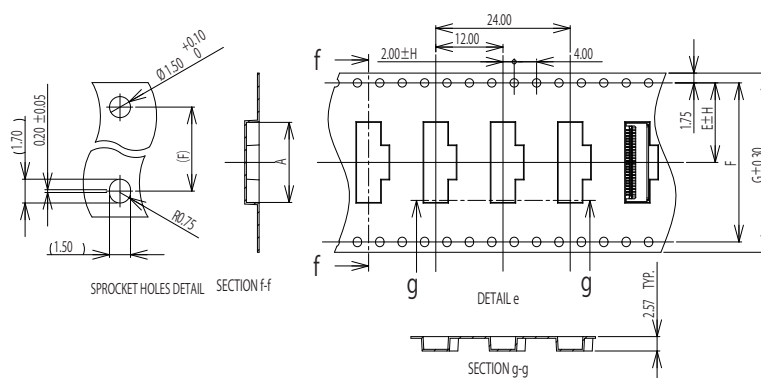
Please refer to page 2 for dimensions of C and E.

► Package Specifications

■ Reel Dimensions



■ Emboss Tape Dimensions



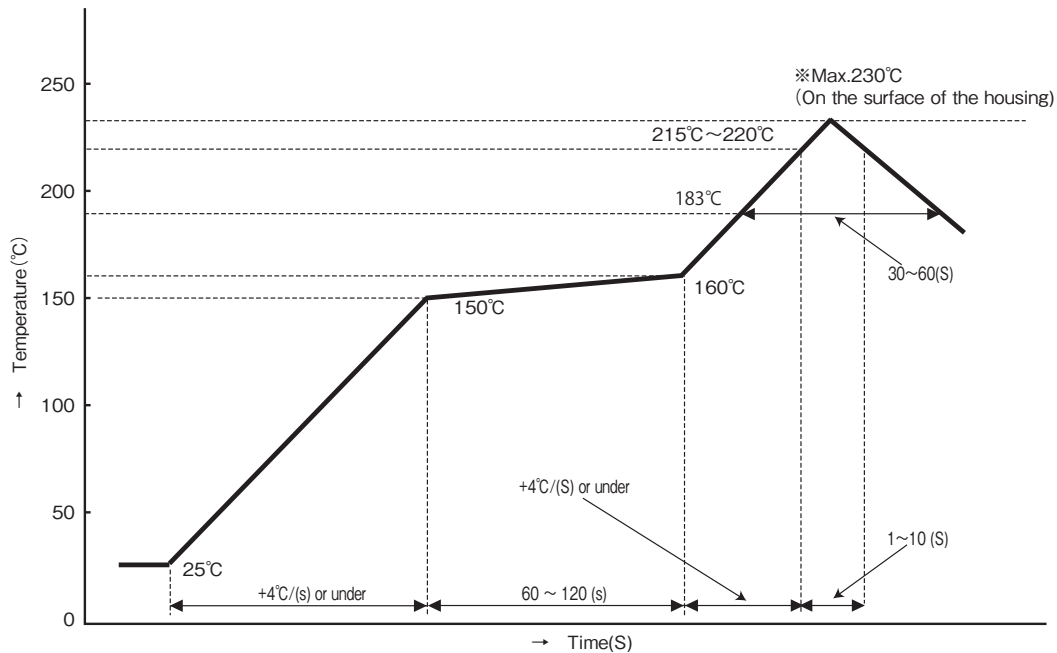
Part Number	Number of Contact	A	B	C	D	E	F	G	H	Quantity
FF14C-40A-R11B-3H	40	22.3	50.4	44.4	38.5	20.2	40.4	44.0	0.15	2000pcs. / Reel
FF14C-50A-R11B-3H	50	27.3								

© Specifications and/or dimensions in this catalog are subject to change without notice.
Please verify the latest specifications with our drawings.

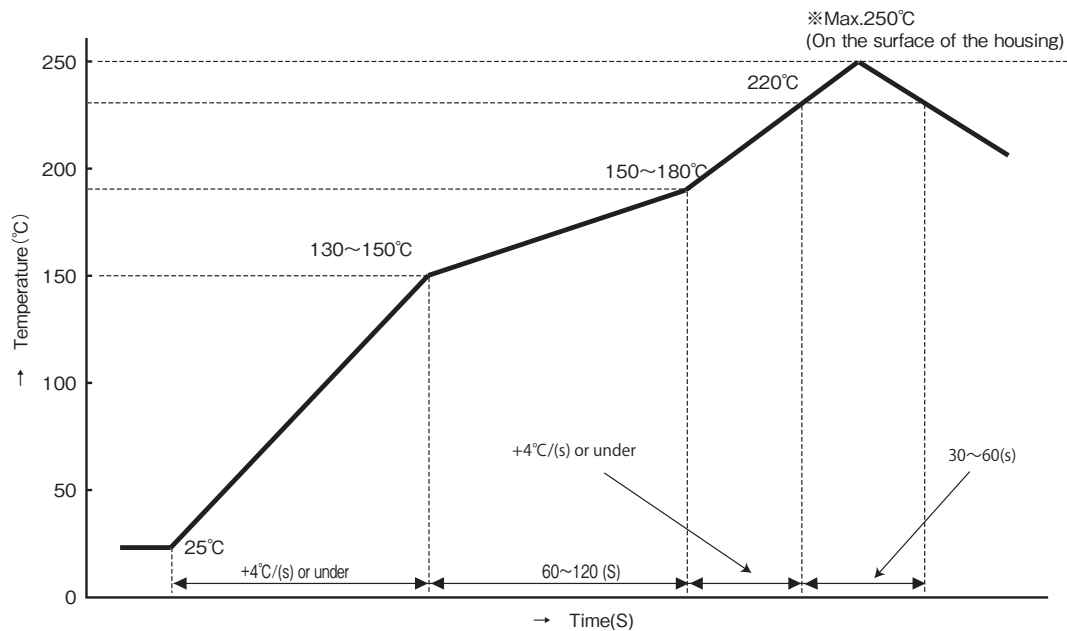
<http://www.ddknet.co.jp>

▶ Recommended Reflow Temperature Profiles

■ for Lead Solder Paste



■ for Lead Free Solder Paste



Caution

This reflow temperature profile is for your reference. It might be changed the temperature condition depend on the solder paste, volumn and flax.