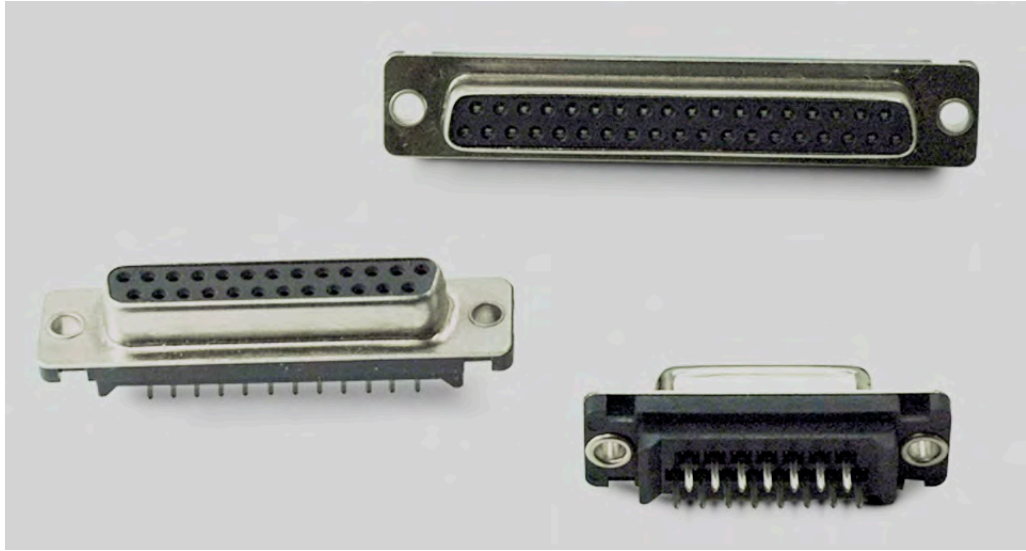


D-Sub Connectors Straight DIP Type

17JE Series

DDK Ltd.



FEATURE

- DIP-type connector mounted directly on PCB. Contact tail is straight, allowing vertical mounting of connector on PCB.
- Number of contacts : 9, 15, 25 and 37
- Press-fabricated contacts. Standard surface finishing of contacts : Connections Au-plated (0.4 μm) on Ni-substrata, tails Sn-Ag plated.
- To fasten engagement with counterpart, an engaging block and a hexagon-head nut can be attached, allowing connection of PCB's and metal shell's grounding and improving resistance against EMI.

SPECIFICATIONS

Rated Voltage	300V AC (r.m.s.)
Rated Current	5A / Contact
Dielectric Withstanding Voltage	1,000V AC (r.m.s.) / 1 minute
Insulation Resistance	1,000M Ω min. at 500V DC
Contact Resistance	15m Ω max.
Operating Temperature	- 25°C ~ + 85°C

MATERIAL / FINISH



Item	Material / Finish
Insulator	Polyamide Resin (UL94V-0) / Black
Shell	Steel / Ni Plating
Contact	Copper Alloy / Contact Area: Au(0.4 μm) over Ni Plating Tail Area: Sn-Ag Plating over Ni Plating
Eyelet	Brass / Ni Plating

© Specifications and/or dimensions in this catalog are subject to change without notice.
Your checking the latest specifications with our drawings would be highly appreciated.

► Straight DIP Type Connectors

17JE-13250-37-FA

Mating Style
1 : Socket Connector

Shell Plating
3 : Nickel Plating

Number of Contact
09 : 9 Pin
15 : 15 Pin
25 : 25 Pin
37 : 37 Pin

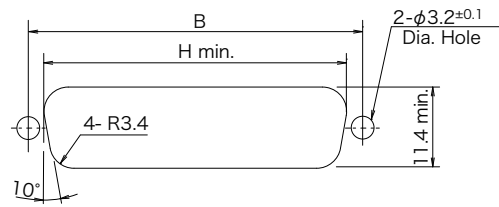
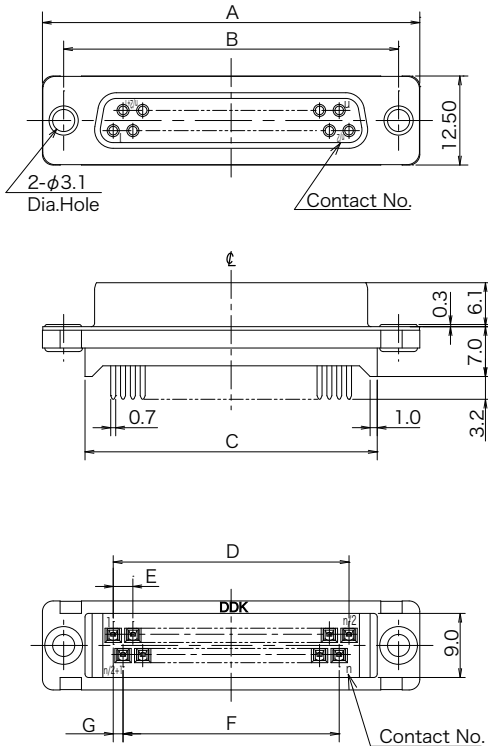
FA: Lead Free

Contact Plating
7 : Contact Area: Au(0.4 μm) over Ni Plating
Tail Area: Sn-Ag over Ni Plating

Contact Tail Style
3 : Straight DIP Type

Key Position
0 : No Key

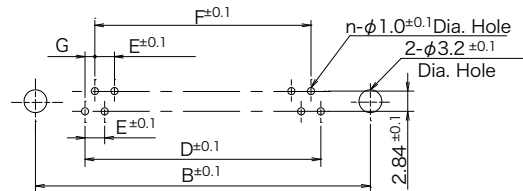
Type 3 (Rear Mounting)



Panel Mounting Dimensions

Panel Thickness : 0.8 ~ 1.3

- Connector can be fastened on the panel.



PCB Mounting Dimensions

(Applicable PCB Thickness : t = 1.6±0.19)

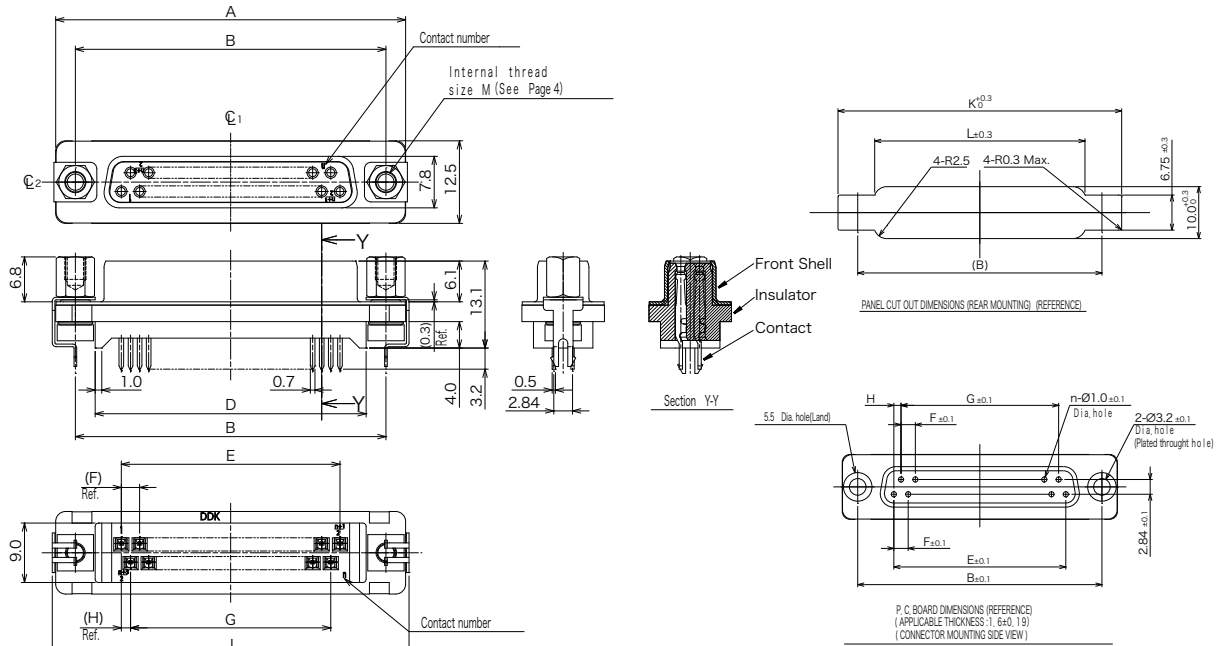
Part Name	Number of Contact	A	B	C	D	E	F	G	H
17JE-13090-37-FA	9	30.8	24.99	18.99	10.98	2.74	8.22	1.37	20.5
17JE-13150-37-FA	15	39.1	33.32	27.32	19.20	2.74	16.44	1.37	28.8
17JE-13250-37-FA	25	53.0	47.04	41.04	33.12	2.76	30.36	1.38	42.5
17JE-13370-37-FA	37	69.3	63.50	57.50	49.68	2.76	46.92	1.38	59.1

© Specifications and/or dimensions in this catalog are subject to change without notice.
Your checking the latest specifications with our drawings would be highly appreciated.

► Straight DIP Type Connectors

17JE-13250-37(D23x)-FA

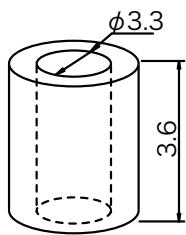
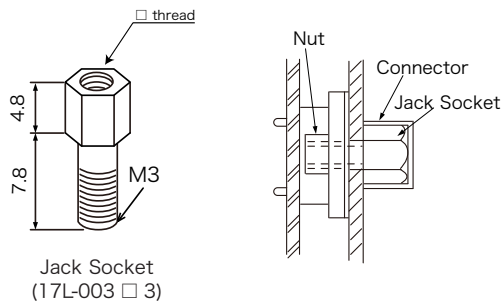
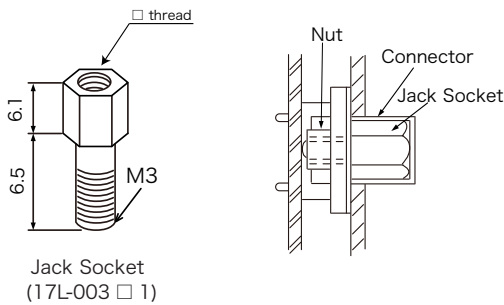
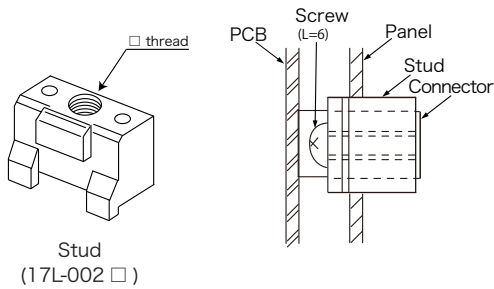
Mating Style 1 : Socket Connector	FA: Lead Free
Shell Plating 3 : Nickel Plating	Deviation With Board Lock Pin, Square Nuts and Jack Socket Assembled and fixed with adhesive. Jack Socket internal thread size "M" (D23A) : M2.6x0.45 (D23B) : M3x0.5 (D23C) : #4-40UNC
Number of Contact 09 : 9 Pin 15 : 15 Pin 25 : 25 Pin 37 : 37 Pin	
Key Position 0 : No Key	
Contact Plating 7 : Contact Area : Au(0.4 μ m) over Ni Plating Tail Area : Sn-Ag over Ni Plating	
	Contact Tail Style 3 : Straight DIP Type



Part Number	Number of Contact	A	B	C	D	E	F	G	H	J	K	L
17JE-13090-37(D23x)-FA	9	30.80	24.99	16.30	18.99	10.98	2.74	8.22	1.37	31.99	32.59	18.50
17JE-13150-37(D23x)-FA	15	39.10	33.32	24.64	27.32	19.20	2.74	16.44	1.37	40.32	40.92	26.80
17JE-13250-37(D23x)-FA	25	53.00	47.04	38.35	41.04	33.12	2.76	30.36	1.38	54.04	54.64	40.50
17JE-13370-37(D23x)-FA	37	69.30	63.50	54.80	57.50	49.68	2.76	46.92	1.38	70.50	71.11	57.00

© Specifications and/or dimensions in this catalog are subject to change without notice.
Your checking the latest specifications with our drawings would be highly appreciated.

▶ Mounting on Panel and PCB



Spacer
(57D-149-6A)

- Thread Size
- A : M2.6×0.45 (Standard)
- B : M3×0.5
- C : #4-40UNC

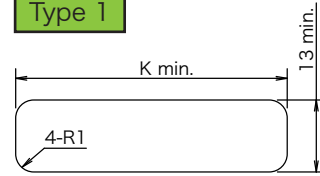
Note: We do not provide pan-head screws and nuts for fixing the accessories.
Please prepare them at your side.

© Specifications and/or dimensions in this catalog are subject to change without notice.
Your checking the latest specifications with our drawings would be highly appreciated.

<http://www.ddknet.co.jp>

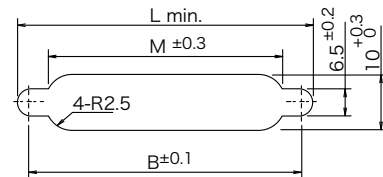
Panel Mounting Dimensions

Type 1



※ Connector can not be fastened on the panel.

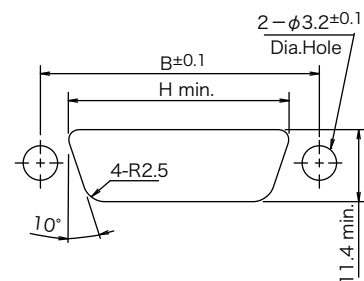
Type 2



※ Connector can not be fastened on the panel.

Type 3

Rear Mounting



※ Connector can be fastened on the panel.
(Panel Thickness : 0.8 ~ 1.3)

Number of Contact	B	H	K	L	M
09	24.99	20.5	34.09	31.0	18.5
15	33.32	28.8	42.42	39.3	26.8
25	47.04	42.5	56.14	53.2	40.7
37	63.50	59.1	72.60	69.5	57.0